

## How to cook your Spagic Studio

Author

Gianfranco Boccalon  
Andrea Zoppello

1	Document Goal.....	3
1.1	Document Conventions .....	3
2	Versions History .....	3
3	Eclipse Europa additional plugins installations.....	4
3.1	BPMN Project Feature .....	4
3.2	Java Emitter Template Feature .....	5
3.3	BPEL plugin.....	6
3.4	Spagic Studio plugins .....	6

# 1 Document Goal

The goal of this document is to provide you the information necessary to transform an Eclipse Europa installation into a Spagic Studio environment.

## 1.1 Document Conventions

In this document we will refer to the version of the Spagic platform as {SPAGIC\_VERSION}.

Current Spagic release is 2.1.0.

# 2 Versions History

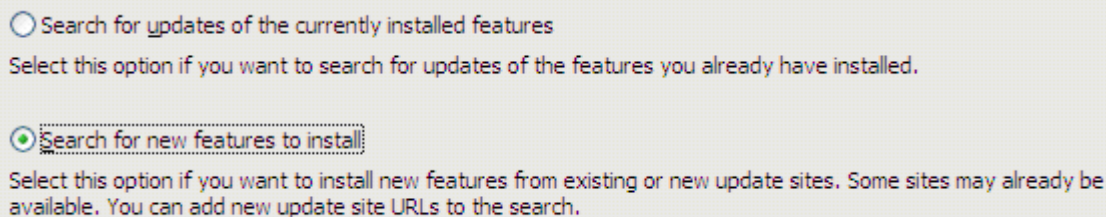
Version/Release n° :	1.0	Date	24/01/2008
Description	First release (English version)		

### 3 Eclipse Europa additional plugins installations

Download “Eclipse IDE for Java EE Developers” (*eclipse-jee-europa-fall2-win32.zip*) from the Eclipse Europa site (<http://www.eclipse.org/downloads/moreinfo/jee.php>).

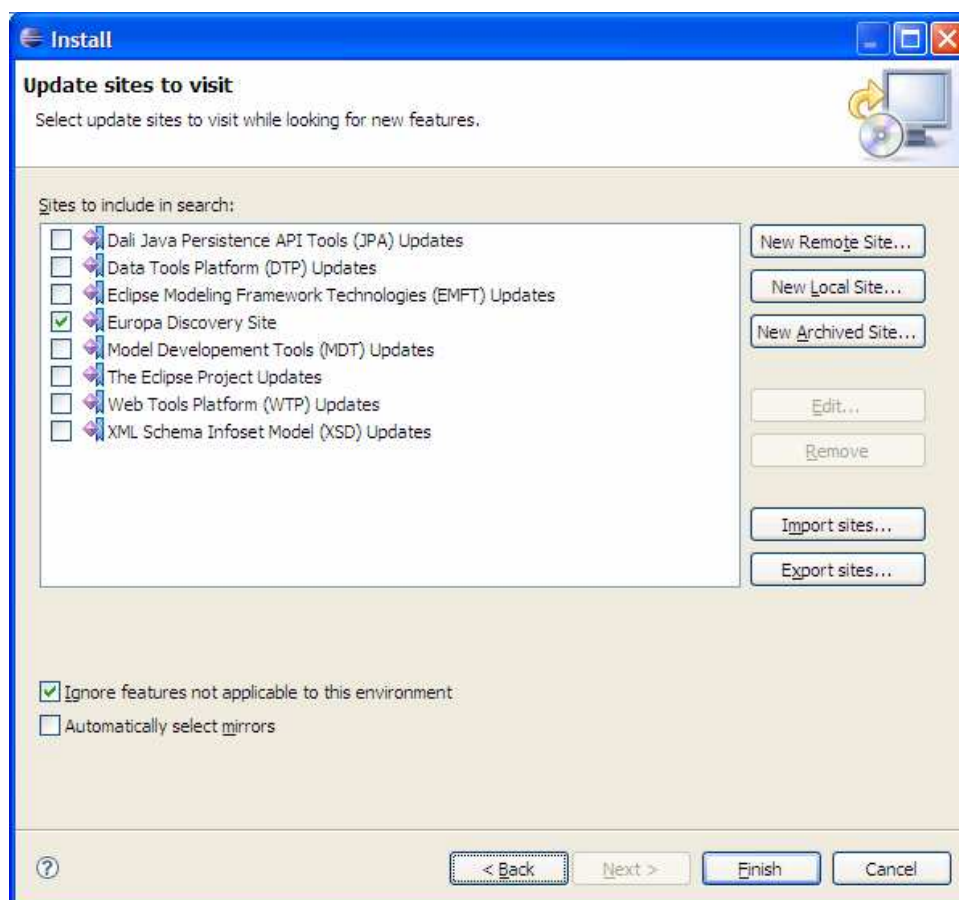
Unzip it and start Eclipse.

Choose *Help->Software Updates->Find and Install...* and select the option “Search for new features to install”.

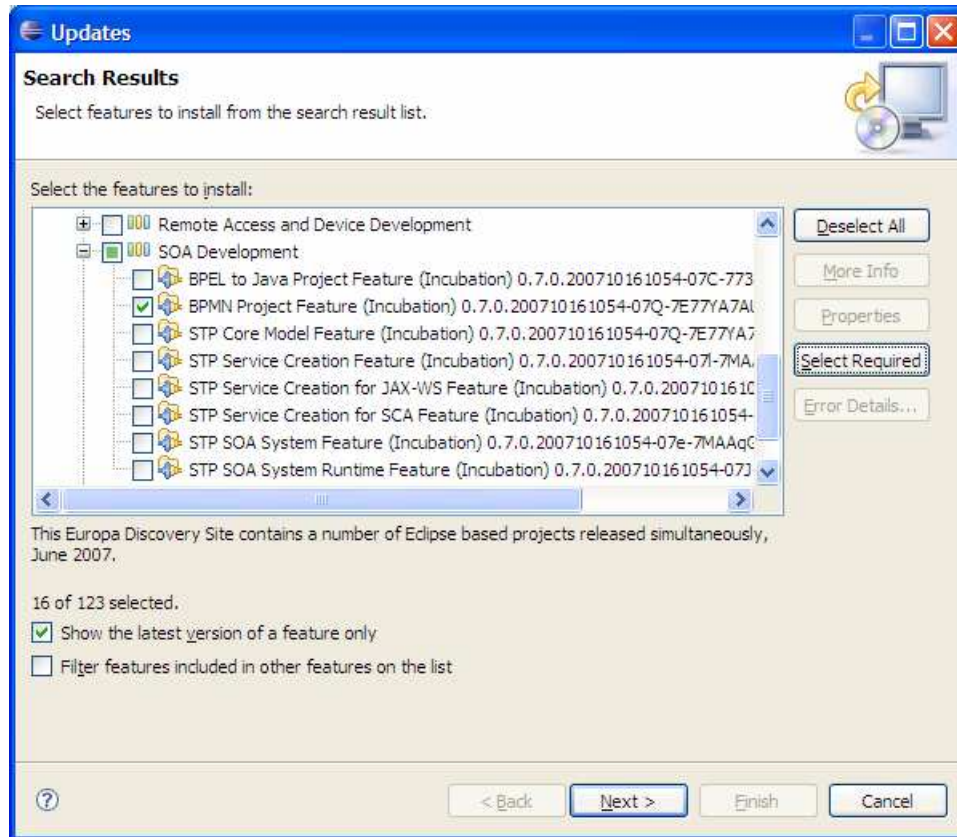


#### 3.1 BPMN Project Feature

Select “Europa Discovery Site” as Update site to use and click “Finish”.



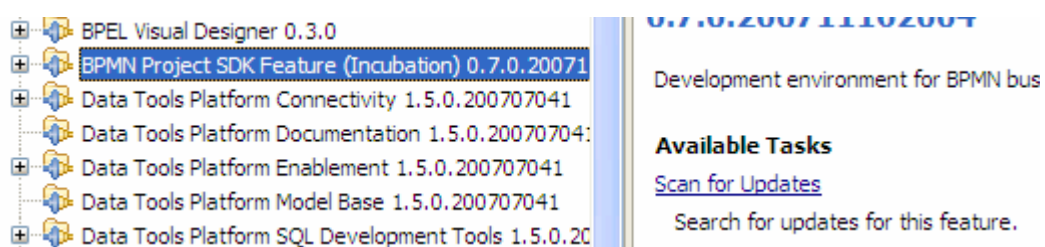
In the features list choose “SOA Development->**BPMN Project Feature**”, select “Select Required” and choose “Next”.



Choose “Install All” when required.

Now you have to update the BPMN feature just installed, because on the Europa site is not the latest release.

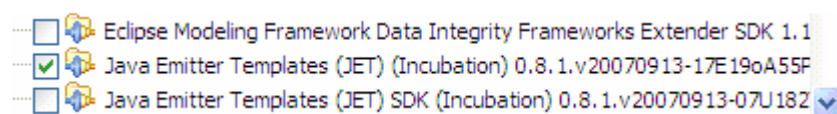
Choose “Help->Software Updates->Manage Configuration”, select the “**BPMN Project SDK Feature**” and execute *Scan for Updates*, installing the available updates.



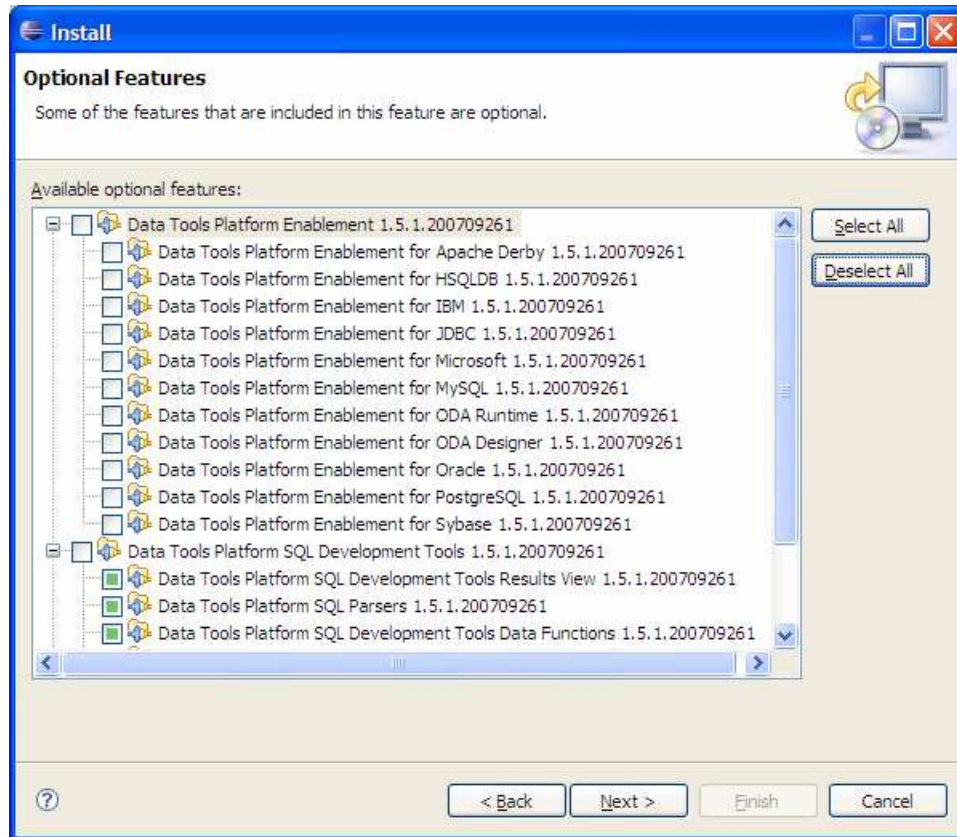
### 3.2 Java Emitter Template Feature

Select again “Europa Discovery Site” as Update site to use and click “Finish”.

In the features list choose “Models and Model Development->**Java Emitter Templates (JET)**” and choose “Next”.

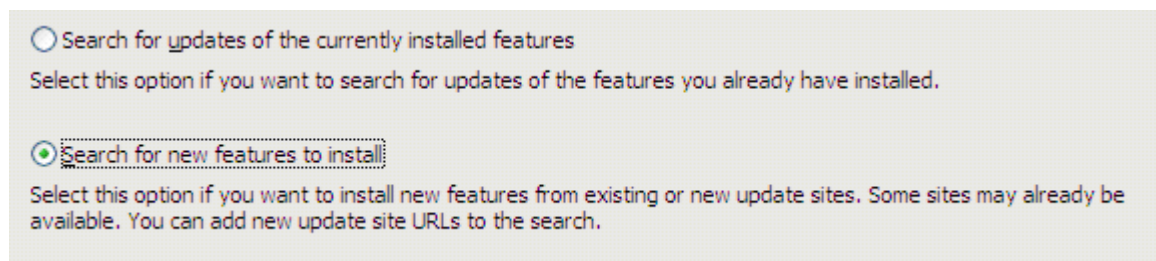


Don't install any available optional features, except for the ones already selected, as shown in the next screenshot.

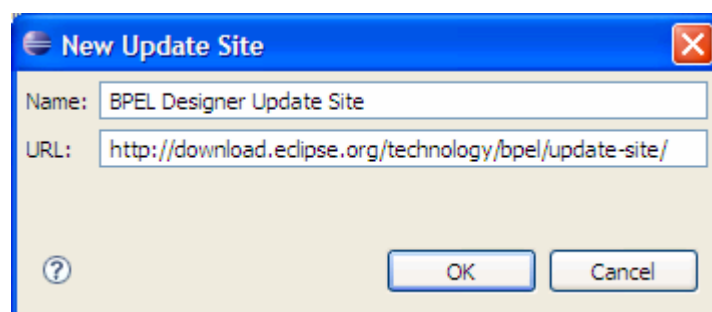


### 3.3 BPEL plugin

Choose again *Help->Software Updates->Find and Install...* and select the option "Search for new features to install".

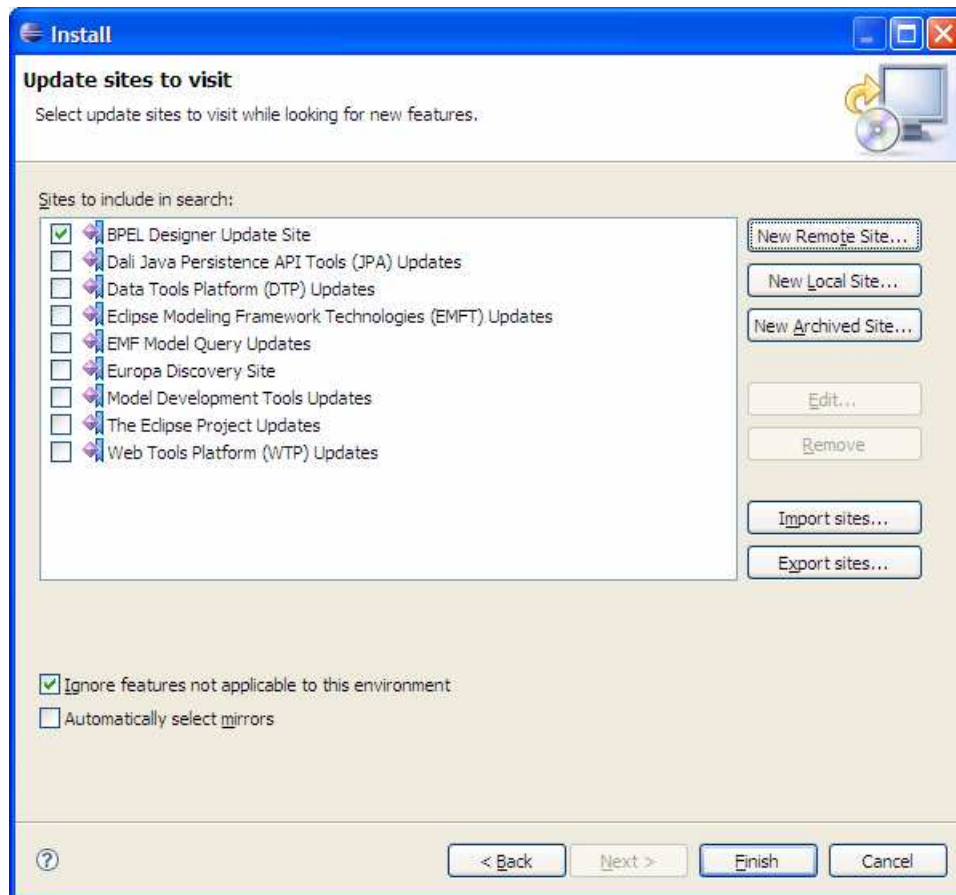


Configure a new Remote Update site as follows:

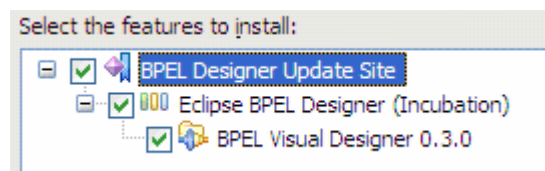




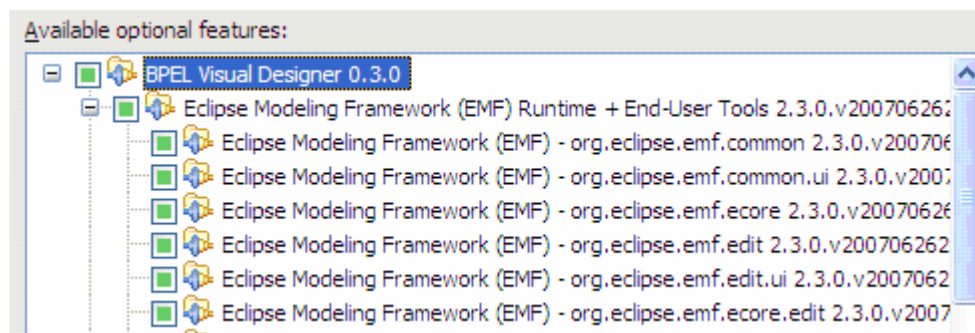
Select the new configured update site and choose “*Finish*”.



Select the feature “*Eclipse BPEL Designer->BPEL Visual Designer 0.3.0*”.



Maintain all the preselected optional features and choose “*Next*”.



### 3.4 Spagic Studio plugins

Install all the Spagic plugins retrieving them from the Spagic distribution.

The Spagic Eclipse plugins are:

- org.eclipse.stp.im.editor\_\${plugin-version}.jar
- org.eclipse.stp.im.edit\_\${plugin-version}.jar
- org.eclipse.stp.im.in.bpmn\_\${plugin-version}.jar
- org.eclipse.stp.im.resources\_\${plugin-version}.jar
- org.eclipse.stp.im.runtime.bpel\_\${plugin-version}.jar
- org.eclipse.stp.im.runtime.jbi.smx\_\${plugin-version}.jar
- org.eclipse.stp.im.runtime\_\${plugin-version}.jar
- org.eclipse.stp.im.tool.in.bpmneditor\_\${plugin-version}.jar
- org.eclipse.stp.im\_\${plugin-version}.jar
- org.spagic.bpel.ode.smx\_\${plugin-version}.jar
- org.spagic.bpel.ode\_\${plugin-version}.jar
- org.spagic.bpmn.diagram\_\${plugin-version}.jar
- org.spagic.im.out.bpel\_\${plugin-version}.jar
- org.spagic.im.out.jbi.smx.wsdl\_\${plugin-version}.jar
- org.spagic.im.out.jbi.smx\_\${plugin-version}.jar
- org.spagic.im.out.metadb\_\${plugin-version}.jar
- org.spagic.ui\_\${plugin-version}.jar
- org.spagic.utils\_\${plugin-version}.jar

Now you have a configured Spagic Studio ready for beginning to design integration processes.