

How to cook your Spagic Studio With Ganymede

Author

Andrea Zoppello

1	Document Goal.....	3
1.1	Document Conventions	3
2	Versions History	3
3	Eclipse Ganymede additional plugins installations.....	4
3.1	BPMN Project Feature	5
3.2	Java Emitter Template Feature	7
3.3	Finishing the Installation.....	7
3.4	Spagic Studio plugins	11

1 Document Goal

The goal of this document is to provide you the information necessary to transform an Eclipse Ganymede For JEE Development installation into a Spagic Studio 2.2.0 environment.

1.1 Document Conventions

In this document we will refer to the version of the Spagic platform as {SPAGIC_VERSION}.

Current Spagic release is 2.2.0.

2 Versions History

Version/Release n° :	1.0	Date	28/07/2008
Description	First release (English version)		

3 Eclipse Ganymede additional plugins installations

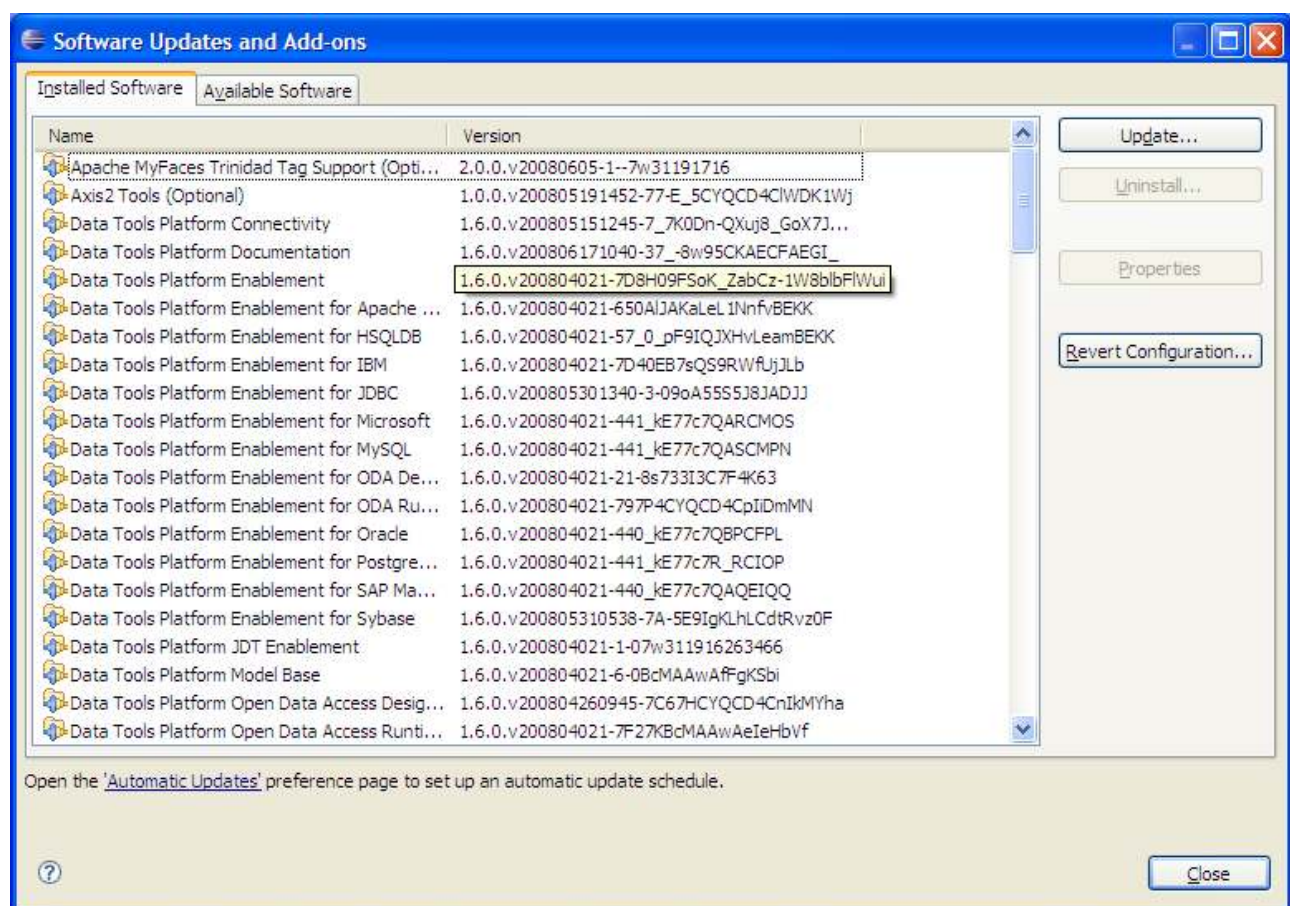
Download "Eclipse IDE for Java EE Developers" from the Eclipse download site <http://www.eclipse.org/downloads/>

You could find both the version for:

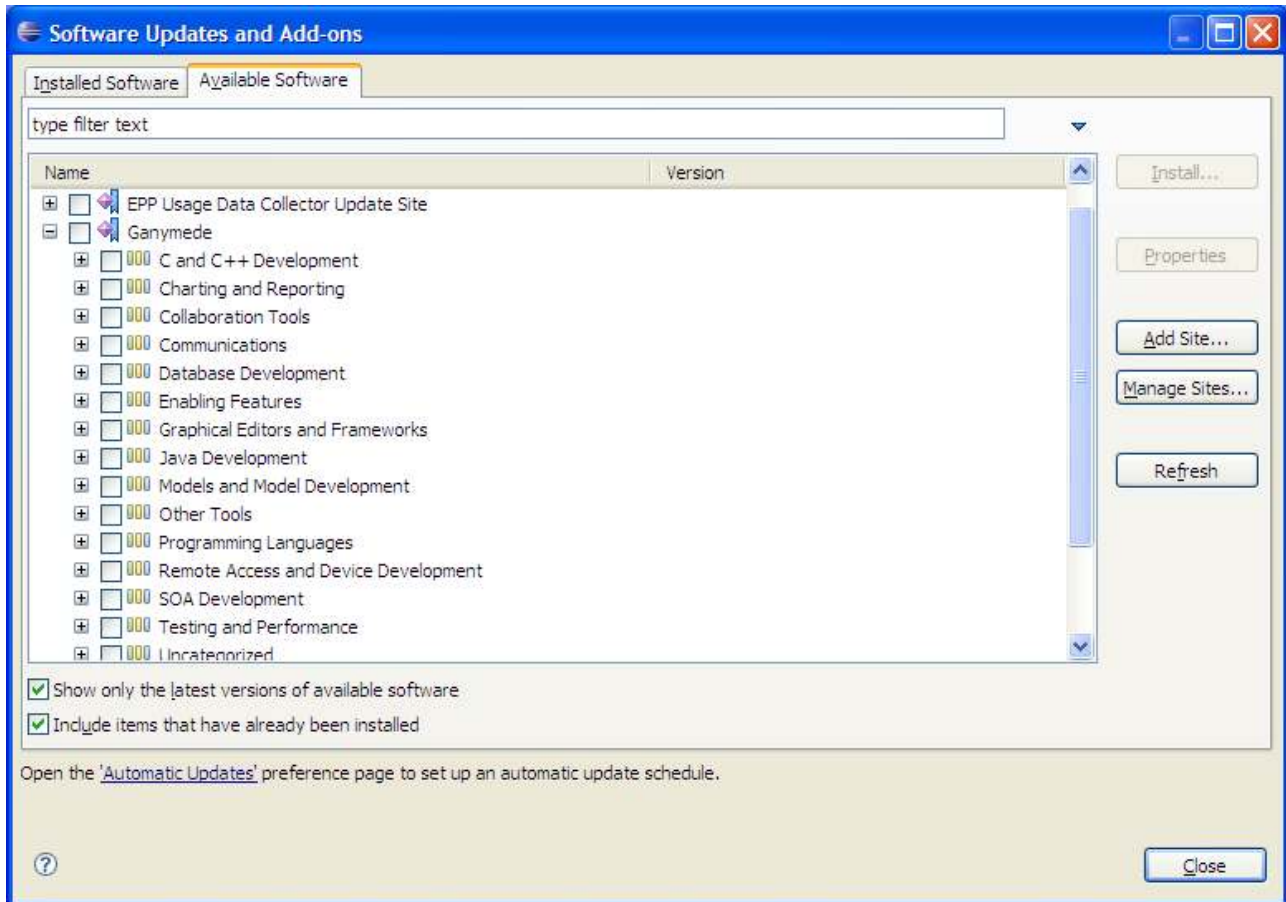
- Windows (eclipse-jee-ganymede-win32.zip)
- Linux (eclipse-jee-ganymede-linux-gtk.tar.gz)

Unzip it in a folder tha we'll call **ECLIPSE_HOME** and start Eclipse.

Choose *Help->Software Updates:*

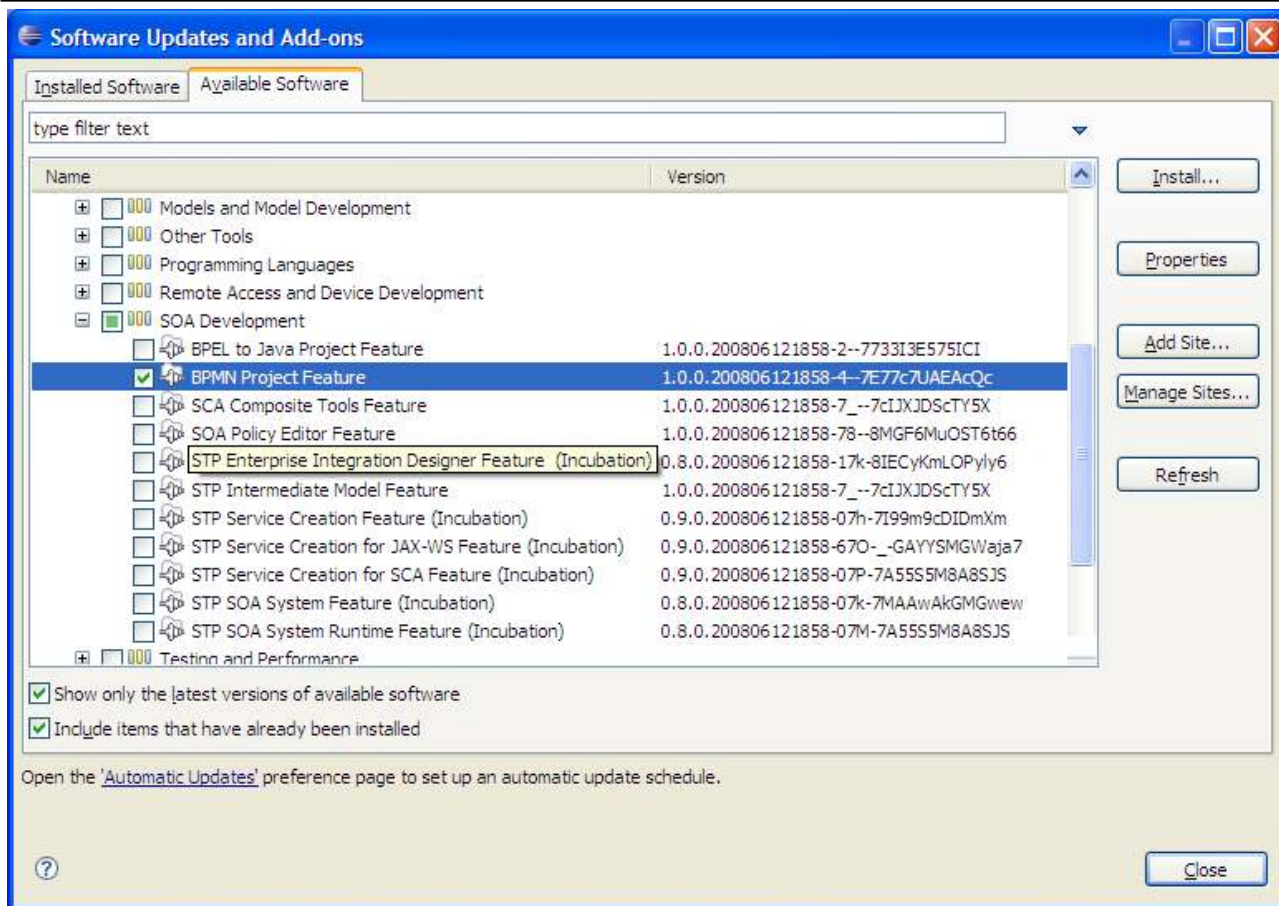


From here select *Available Software* tab and expand the *Ganymede* Entry as follow:



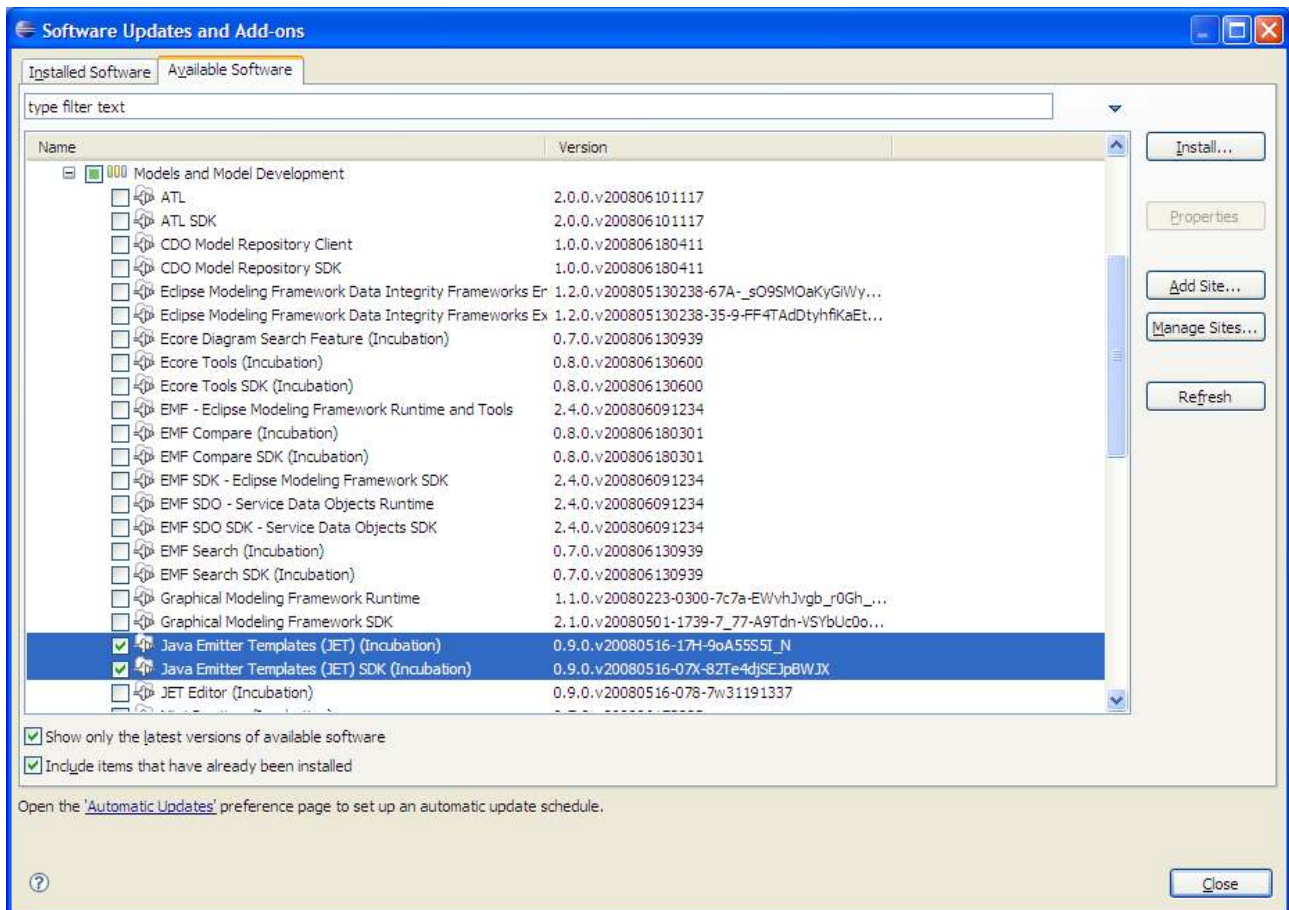
3.1 BPMN Project Feature

From the *Ganymede* subproject expand the **SOA Development** Entry and select the **BPMN Project Feature** as follow:



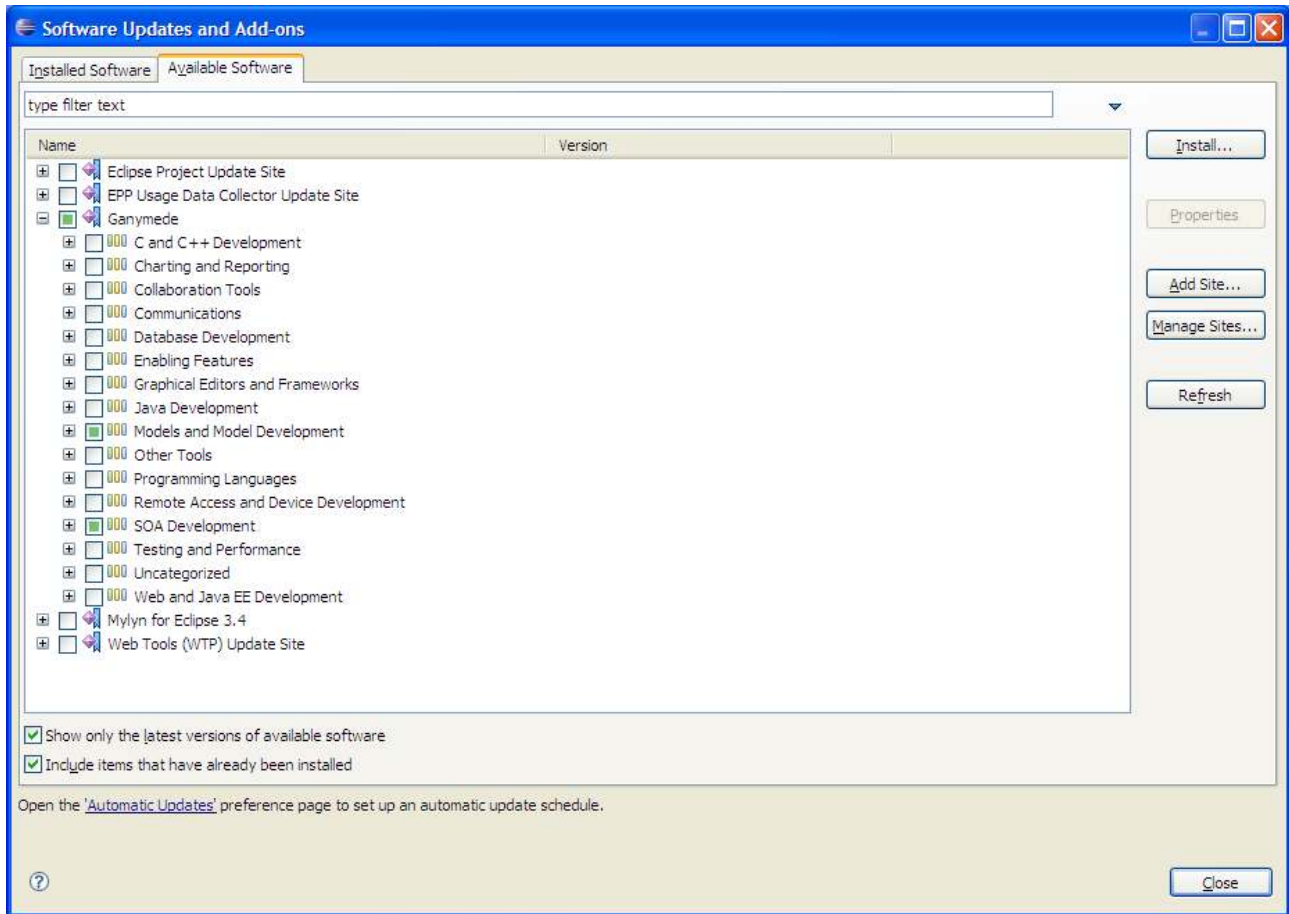
3.2 Java Emitter Template Feature

Then always under Ganymede entry expands the **Models and Model Development** entry and select the **Java Emitter Templates (JET) and Java Emitter Templates (JET) SDK** " as follow:

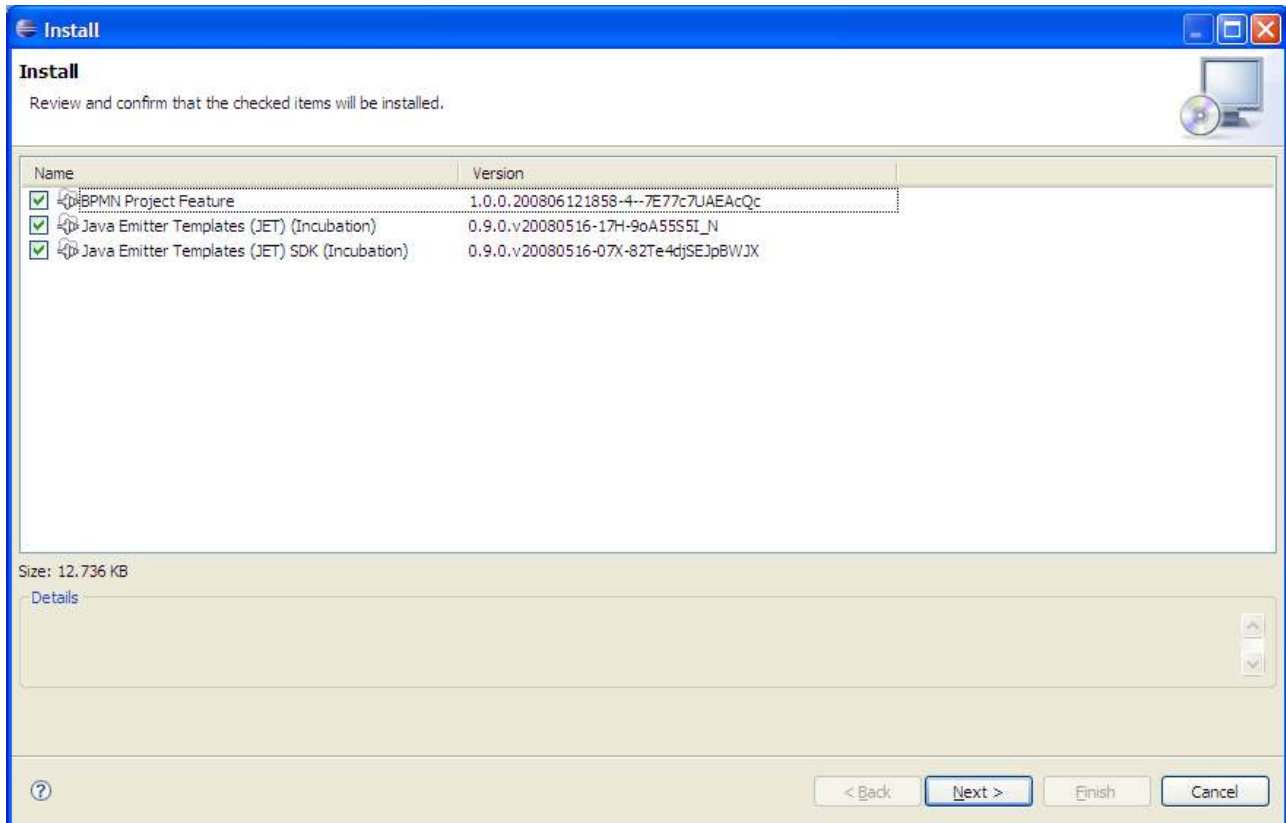


3.3 Finishing the Installation

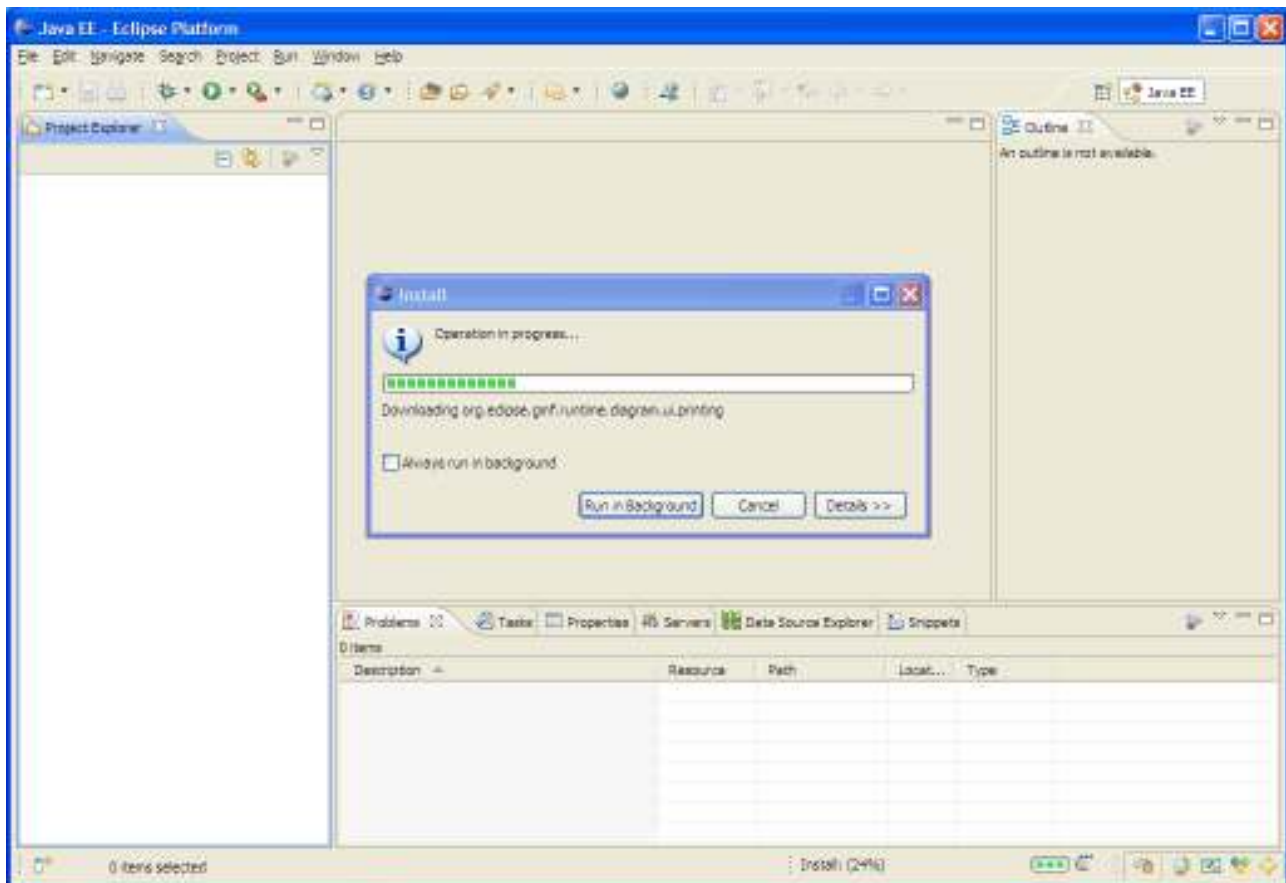
At this point you must have something similar to this on your screen:



Select the install button to install the selected packages, eclipse will ask you to confirm your selection:



Then you must agree to the licenses and push the finish button:



3.4 Spagic Studio plugins

Install all the Spagic plugins retrieving them from the Spagic distribution.

The Spagic Eclipse plugins are:

- javax.wsdl16_1.0.0.{SPAGIC_RELEASE_DATE}.jar
- org.eclipse.bpel.common.model_0.4.0.jar
- org.eclipse.bpel.common.ui_0.4.0.jar
- org.eclipse.bpel.model_0.4.0.jar
- org.eclipse.bpel.runtimes_0.4.0.jar
- org.eclipse.bpel.ui_0.4.0.jar
- org.eclipse.bpel.wsil.model_0.4.0.jar
- org.eclipse.stp.im.editor_1.0.0.{SPAGIC_RELEASE_DATE}.jar
- org.eclipse.stp.im.edit_1.0.0.{SPAGIC_RELEASE_DATE}.jar
- org.eclipse.stp.im.in.bpmn_1.0.0.{SPAGIC_RELEASE_DATE}.jar
- org.eclipse.stp.im.resources_1.0.0.{SPAGIC_RELEASE_DATE}.jar
- org.eclipse.stp.im.runtime.bpel_1.0.0.{SPAGIC_RELEASE_DATE}.jar
- org.eclipse.stp.im.runtime.jbi.smx_1.0.0.{SPAGIC_RELEASE_DATE}.jar
- org.eclipse.stp.im.runtime_1.0.0.{SPAGIC_RELEASE_DATE}.jar
- org.eclipse.stp.im.tool.in.bpmneditor_1.0.0.{SPAGIC_RELEASE_DATE}.jar
- org.eclipse.stp.im_1.0.0.{SPAGIC_RELEASE_DATE}.jar
- org.spagic.bpel.ode.smx_1.0.0.{SPAGIC_RELEASE_DATE}.jar
- org.spagic.bpel.ode_1.0.0.{SPAGIC_RELEASE_DATE}.jar
- org.spagic.bpmn.diagram_1.0.0.{SPAGIC_RELEASE_DATE}.jar
- org.spagic.im.out.bpel_1.0.0.{SPAGIC_RELEASE_DATE}.jar
- org.spagic.im.out.jbi.smx.wsdl_1.0.0.{SPAGIC_RELEASE_DATE}.jar
- org.spagic.im.out.jbi.smx_1.0.0.{SPAGIC_RELEASE_DATE}.jar
- org.spagic.im.out.jbpm_1.0.0.{SPAGIC_RELEASE_DATE}.jar
- org.spagic.im.out.metadb_1.0.0.{SPAGIC_RELEASE_DATE}.jar
- org.spagic.im.runtime.jbpm_1.0.0.{SPAGIC_RELEASE_DATE}.jar
- org.spagic.ui_1.0.0.{SPAGIC_RELEASE_DATE}.jar
- org.spagic.utils_1.0.0.{SPAGIC_RELEASE_DATE}.jar

Now you have a configured Spagic Studio ready for beginning to design integration processes.