



# GUIDE

# USER

FUNAMBOL

## Setting Up and Using the Funambol Outlook Sync Client v8.0

### **Contents**

“Introduction” .....	2
“Requirements” .....	2
“Installing the Funambol Outlook Sync Client” .....	2
“Using the Outlook Sync Client” .....	5
“Reviewing a Log of Recent Synchronization Activity” .....	6
“Customizing Synchronization Settings” .....	6
“Customizing the Sync Client Log Settings” .....	9
“Recovering Lost Data” .....	9
“Uninstalling the Funambol Outlook Sync Client” .....	10

---

## Introduction

The Funambol Outlook Sync Client lets you quickly synchronize a range of PIM (Personal Information Manager) data between Microsoft Outlook and an Internet-accessible Funambol DS server. This data (including contacts, calendar events, tasks, and notes) is available to all your other Funambol-ready mobile devices or computers, including other copies of Outlook that you use.

The sync client can be installed on any computer running a qualifying version of Outlook on the appropriate version of Microsoft Windows (both listed below in “Requirements”). You can directly install the package from the remote website, or install it after you download the installer to your computer.

---

## Requirements

- The Funambol sync client can be installed on a computer (desktop or laptop) running Microsoft Windows XP or Vista, and may be used with Outlook 2002 (XP), 2003, or 2007.
- Installation must be done by a user with “Administrator” privileges on this PC. After installation, any Outlook user with access to this computer can take advantage of the Funambol Outlook Sync Client. (Note that each user’s synchronized data is privacy-protected, and not available to other users.)
- You need either the Funambol Portal login entries (user name and password) or the user name and password for an existing user account on a Funambol server
- You’ll need the location or URL of the Funambol server or Portal used to store your personal information.

---

## Installing the Funambol Outlook Sync Client

### • Downloading the Installer

The Outlook Sync Client can be installed directly from the remote website, or installed after you download the installer to your computer. If you have not already obtained the Outlook Sync Client installer, you can do so by downloading it from the [www.funambol.com](http://www.funambol.com) website or from the download section on your Funambol Portal account.:

\* If an older version of the sync client is installed on your computer you must uninstall it (as described in “Uninstalling the Funambol Outlook Sync Client” on page 10). If, however, you are installing a more recent upgrade of an existing version 6 sync client (such as a beta version), run the installer, as it will effectively upgrade your current version.

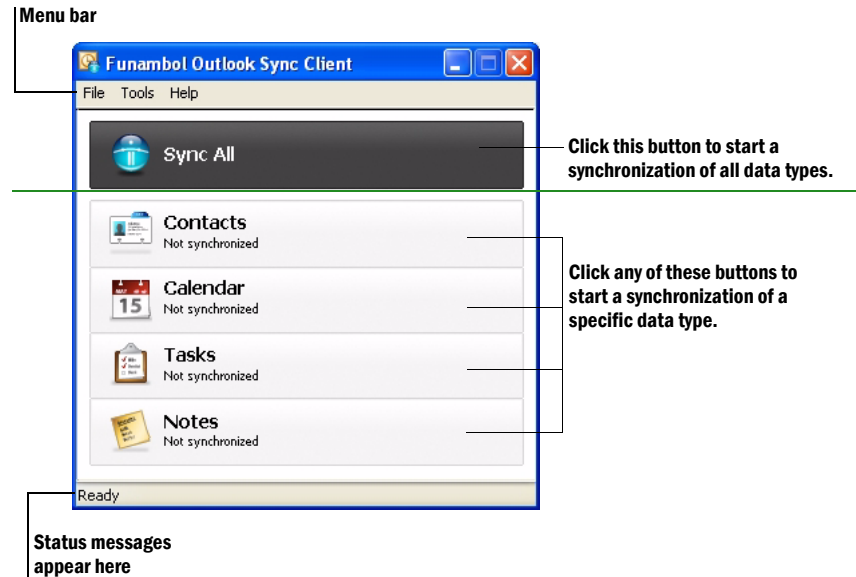
### • Getting Started

As noted previously in “Requirements”, you must have logged into your computer as a user with “Administrator” privileges.

- 1 Locate and double-click the installer file icon.
- 2 Work through the installer wizard that appears on-screen.
  - You can accept the default settings for both *Install Location* and *Start Menu* folder.

- 3 In the non-commercial version of the sync client, a pop-up may appear requesting you to accept the License Agreement. In that case, select the **I Agree** radio button and then click the now active **OK** button.
- 4 When the final Completing Funambol Outlook Sync Client Setup Wizard appears, make sure the **Run Funambol Outlook Sync Client** checkbox is checked, then click **Finish**.

The Funambol Outlook Sync Client window appears.



You will now prepare the sync client for network connections, as detailed in the next section.

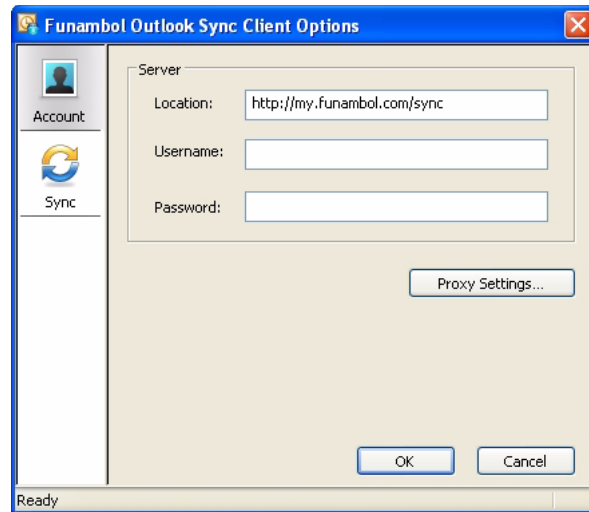
### • Preparing the client for Funambol Server Connections

The following applies to any and all users of Microsoft Outlook on this computer. Follow this procedure to prepare Outlook (through the sync client) for a connection to the Funambol server, so that synchronization can occur. Each user must do this, as the Outlook Sync Client will remember every user's specific settings (and keep each user's data privacy-protected).

**Note:** You do **not** have to be a user with "Administrator" privileges to perform any of the following procedures.

- 1 If you have not already started the sync client, click **Start** and choose **Programs | Funambol | Outlook Sync Client | Funambol Outlook Sync Client**.
- 2 After the Outlook Sync Client window appears, choose **Tools | Options**.

The Account options appear in the Outlook Sync Client Options dialog box.



3 Edit the following fields:

**Location—**

If using a different portal than myFunambol, type the URL or location of the Funambol Portal or Funambol server of your choice in this field.

**Username—**

Type the Funambol username. This is the user name you created when you first registered with a Funambol Portal, or when you first set up a user account on a Funambol server.)

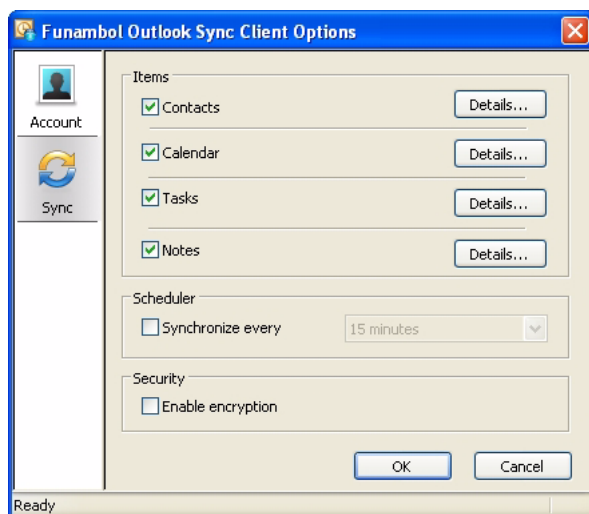
**Password—**

Type your Funambol password.

4 If you need to make proxy server entries, click **Proxy Settings** to open the dialog box. (You can assume you don't need to, unless network/IT support staff notify you.)

5 Click the **Sync** button in the left-hand column

The synchronization options appear in the Outlook Sync Client Options dialog box..



6 Use this set of options to customize the following:

- Choose the data types you want to synchronize
- Customize specific synchronization settings, unique to each Outlook category
- Set a regularly scheduled synchronization of your Outlook data
- Activate encryption of synchronized data (requires server setup)

**Tip:** For full details, see “Customizing Synchronization Settings” on page 6.

- 7 Click **OK** to save the sync client option entries and apply them.

Your Outlook Sync Client is ready for use. You can close the window, if you prefer, or leave it open and start an immediate synchronization.

---

## Using the Outlook Sync Client

Once the Outlook Sync Client has been installed and set up with user-specific entries, any user can take advantage of the sync client and you do not need to have “Administrator” rights at this point. To use the Funambol Outlook Sync Client for an actual two-way data synchronization, follow these steps:

- 1 Start Microsoft Outlook.
- 2 Look for a **Funambol** menu (left) in the main Outlook menu bar, or a Funambol tool “palette” (right):

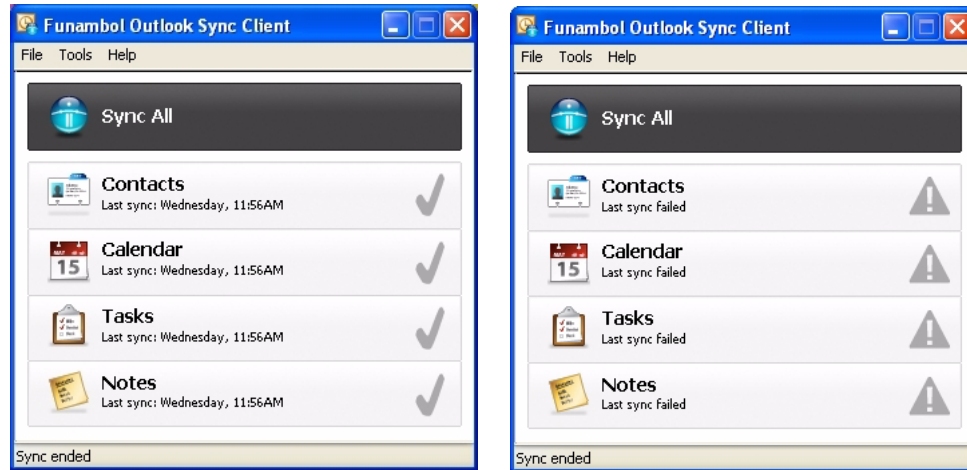


- 3 Either choose **Funambol | Sync All** or click **Sync All** (in the tool palette).

After the synchronization is made (whether successful or not), the Outlook Sync Client window appears. You have two options:

- Look in the status bar of the window for a report on the synchronization (“successful” or “failed”), or...

- Look in each category for a “checkmark” (left) if successful, or an alert triangle (right) if failed.



- 4 When the synchronization is complete, you can exit the sync client window.

**Note:** after a fresh install of the sync client, the server will request a full sync for all items

---

## Reviewing a Log of Recent Synchronization Activity

If for any reason you want to review what happened in the most recent synchronization, you can open a log of the most recent synchronization by following these steps:

- 1 After starting the Outlook Sync Client, choose **Tools | Logging**.
- 2 When the Logging dialog box appears, click **View Log**.

A Windows Notepad text window appears, detailing all the tasks attempted in the most recent synchronization.

**Alert:** Some information about synchronization failures will be recorded, but in a form that only an IT professional might understand.

- 3 When you're finished reviewing the contents of the log, close the Notepad window.

**Tip:** Funambol offers client log settings that you can customize according to your preferences. See “Customizing the Sync Client Log Settings” on page 9 for more information.

---

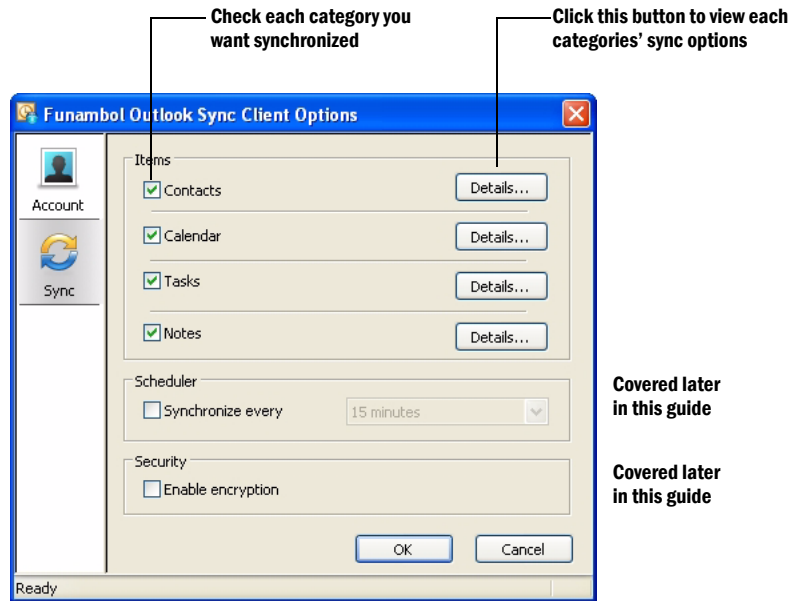
## Customizing Synchronization Settings

To review and customize all of the user-customizable synchronization options for the Outlook Sync Client, follow these steps:

- 1 Start Outlook.
- 2 Open the **Funambol** menu and choose **Options**.

- Or, choose **Start | Programs | Funambol | Outlook Sync Client | Funambol Outlook Sync Client**, and when the Outlook Sync Client window appears, choose **Tools | Options**.

**3** When the Sync Client Options dialog box first appears, the **Sync** options are displayed.

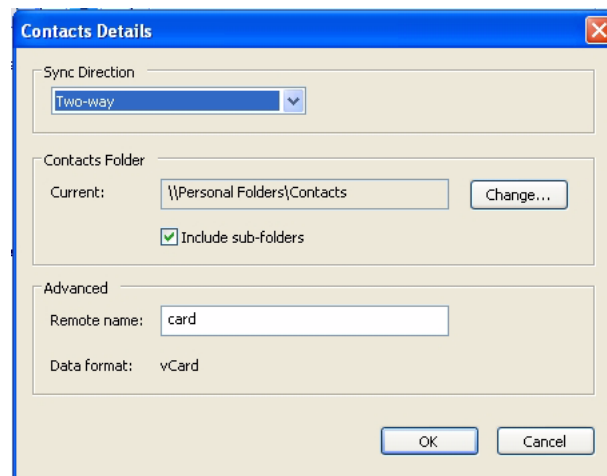


**4** Click the checkbox by each type of Outlook data (“items”) you want to synchronize.

## • Synchronization Option Details

**1** Click **Details** by each checked Outlook type (“item”).

The [Item Name] Details dialog box appears, as shown here.



**2** Open the **Sync Direction** menu and review the following options:

### **Two way**

Activates a two-way synchronization (between Outlook/PC and Funambol server). New or changed information in one source will be added to the other—in both directions. Nothing is lost.

**One way: Server-Outlook**

Activates one-way synchronization, from Funambol server to Outlook. Any new or revised information stored on the Funambol server will be copied to Outlook.

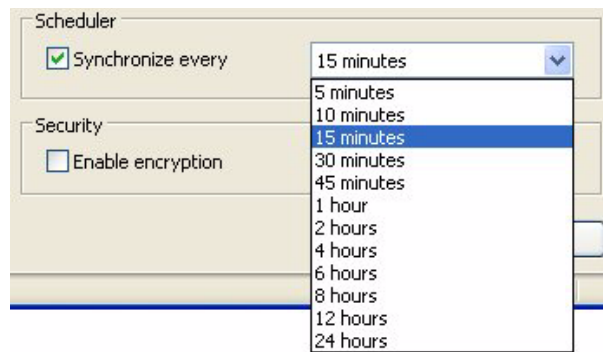
**One way: Outlook-Server**

Activates one-way synchronization, from Outlook to Funambol server. Any new or revised information stored in Outlook will be copied to the Funambol server

- 3** To change the source folder for a specified Outlook item, click **Change** to open a Browse dialog box that you can use to find and select the correct folder.
- 4** Subfolders in the source folder are synchronized (“included”) by default.
- 5** Review the Advanced options, but make no changes unless instructed to do so by support staff, or unless you are extremely familiar with DS server operations. (The default settings are acceptable for most users.)
- 6** When you are finished with the synchronization details for an Outlook item, click **OK** to save and apply any changes.
- 7** Repeat this series of steps to review and customize the Details for each Outlook item.

### • Scheduling Regular Synchronizations

The Sync Client Options dialog box assists you in scheduling regular synchronizations of your Outlook items. Assuming you have an always-on Internet connection and Outlook is continually active, take advantage of the following Scheduler options:



- 8** Click the checkbox to activate the synchronization schedule.
- 9** Pick a time interval from the drop down menu.
- 10** Click **OK** to save your settings and apply them.

If (1) your network connection is “always on”, (2) and Outlook is communicating automatically with the Funambol server, then (3) this synchronization schedule will be active.

### • About the Security/Encryption option

The Outlook Sync Client (when active) automatically applies industry-standard encryption/decryption to all data exchanges between Outlook and the Funambol server. This protects your data from theft and abuse, but it also slightly slows the speed of synchronization. Note that encryption must have been previously activated on your Funambol server in order for this option to work.



- **When you are finished with Options and Details**

- 1** Review every item's details, and when finished, click **OK** to apply your changes and close the [Item] Details dialog box. These changes go into effect immediately.
- 2** When you are finished with the synchronization details for all Outlook items, click **OK** to apply any changes and close the Sync Client Options dialog box.

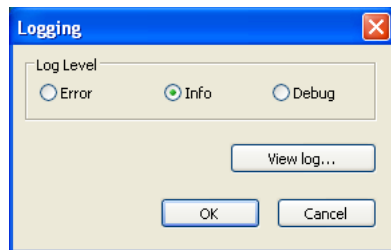
---

## **Customizing the Sync Client Log Settings**

Funambol offers three levels of logging activity, which can be helpful in debugging errors or problems. To review and change the options, follow these steps.

- 1** After starting the sync client, choose **Tools | Logging**.

The Logging Options dialog box appears.



- 2** Choose from the following three **Log Level** options:
  - Error** Only logs synchronization errors.
  - Info** Reports the basic synchronization activity, including errors.
  - Debug** Reports more information, which is helpful in diagnosing the cause of problems or errors.
- 3** When you're finished, click **OK** to save and apply the settings.

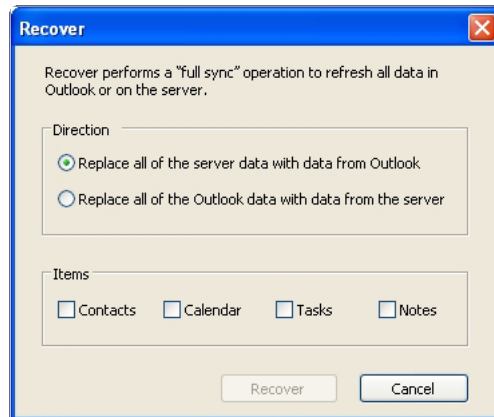
---

## **Recovering Lost Data**

If, for any reason, all Outlook contacts, task, notes or calendar information has been lost on your computer/laptop, you can restore what has been previously synchronized by following these steps:

- 1** After opening the sync client window, choose **Tools | Recover**.

The Recover dialog box appears.



- 2 Determine the direction in which you want the data to be copied.

**Alert!** Be careful to choose the correct direction for recovery.

- 3 Click the checkboxes by the data categories you want to recover.

- Recoverable data includes contacts, calendar, tasks and notes. Depending upon your use of Outlook, the options you've previously set up, and innate Funambol limitations, not all data will be recovered in every category.

- 4 Click the now-active **Recover** button to start the process.

The Recover dialog box closes, and status messages appear in each of the buttons listed in the main sync client window.

When the recovery is complete, the status bar will display "Sync ended".

---

## **Uninstalling the Funambol Outlook Sync Client**

**Important:** During the uninstallation process, you can choose to retain or delete all client users' local files and settings. Retaining the settings will speed up your use of any new installations of the sync client.

- 1 Click **Start** and choose **Programs | Funambol | Outlook Sync Client | Uninstall**.  
Alternatively, click **Start** and choose **Settings | Control Panel | Add Remove Programs**; when the Add/Remove Programs window appears, locate and select the Funambol Outlook Sync Client as listed in this window, and click **Remove**.
- 2 A confirmation dialog box appears. To proceed, click **Yes**.

## Legal Information

Contents copyright © 2009 Funambol, Inc. All rights reserved.

The information contained in this publication is subject to US and international copyright laws and treaties. Except as permitted by law, no part of this document may be reproduced or transmitted by any process or means without the prior written consent of Funambol, Inc.

Funambol, Inc. has taken care in preparation of this publication, but makes no expressed or implied warranty of any kind.

Funambol, Inc. does not guarantee that any information contained herein is and will remain accurate or that use of the information will ensure correct and faultless operation of the relevant software, service or equipment.

Funambol, Inc., its agents and employees shall not be held liable for any loss or damage whatsoever resulting from reliance on the information contained herein.

Funambol and Sync4j are trademarks and registered trademarks of Funambol, Inc.

All other products mentioned herein may be trademarks of their respective companies.

Published by Funambol, Inc.

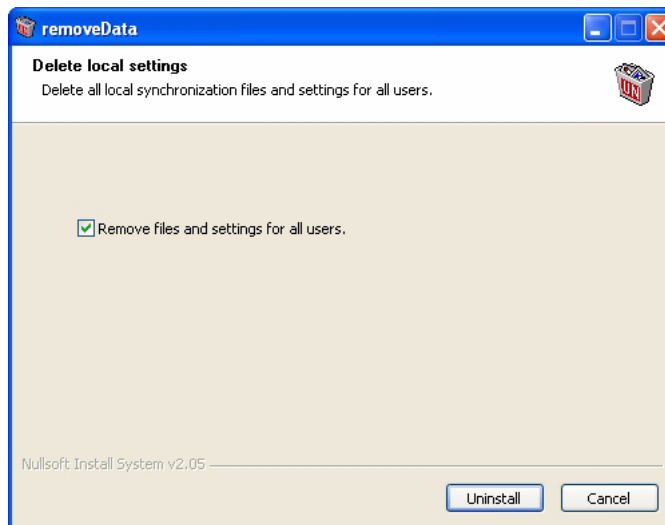
643 Bair Island Road, Suite 305  
Redwood City, CA 94063

## Technical Support

If you would like updated and expanded information about the sync client, or, if you are having problems, you can get to a variety of support resources linked to this site:

<http://www.funambol.com/support>

An additional window appears.



- 3 To store a copy of all your current client user and connection settings on this PC, clear (uncheck) the checkbox in this window. The next time a Funambol Outlook Sync Client is installed, these saved settings will be automatically applied.
- 4 Click **Uninstall** to start the removal of the client.  
When successfully removed, another confirmation dialog box appears.
- 5 Click **OK**. You can now close the Add/Remove Programs window.