

Funambol iPod Plug-in

User's Guide

Version 3.0
July 2006



Important Information

© Copyright Funambol, Inc. 2006. All rights reserved.

The information contained in this publication is subject to US and international copyright laws and treaties. Except as permitted by law, no part of this document may be reproduced or transmitted by any process or means without the prior written consent of Funambol, Inc.

Funambol, Inc. has taken care in preparation of this publication, but makes no expressed or implied warranty of any kind. Funambol, Inc. does not guarantee that any information contained herein is and will remain accurate or that use of the information will ensure correct and faultless operation of the relevant software, service or equipment.

Funambol, Inc., its agents and employees shall not be held liable for any loss or damage whatsoever resulting from reliance on the information contained herein.

Funambol and Sync4j are trademarks and registered trademarks of Funambol, Inc.

All other products mentioned herein may be trademarks of their respective companies.

Published by Funambol, Inc., 643 Bair Island Road, Suite 305, Redwood City, CA 94063



Contents

Introduction	1
Installation	2
Obtaining the Software	2
Installing the Software	2
Configuring the Plug-in	3
Uninstalling the Software	3
Using the Funambol iPod Plug-in	4
Home Screen	4
Main Menu Overview	5
File Menu	6
Edit Menu	6
Help Menu	9
Resources	10
Related Documentation	10





Introduction

The Funambol iPod Plug-in provides synchronization functionality for the Apple iPod. After installing the software, you can synchronize contacts and calendar data on the iPod with that stored in enterprise data sources. This document described how to install, configure, and use the software.



Installation

The section provides details for obtaining, installing and configuring the software.

Obtaining the Software

The Funambol iPod Plug-in software is available as follows:

Download site: www.funambol.com/opensource/downloads.html

File: `funambol-ipod-plugin-3.0.x.exe`

Size: 1.3 MB

Installing the Software

You install the iPod Plug-in software on a computer. The iPod does not need to be connected to the computer during installation, since no software is installed on the device. If a previous version of the plug-in is installed, you should uninstall that version before proceeding.

1. Run the executable installation file.
2. Review the license agreement. To accept the terms, select the checkbox and click **Next**.
3. Accept the suggested **Destination Folder** (i.e., the `\Funambol\plug-ins\Funambol iPod Plug-in` directory) and click **Next**.
4. Accept the suggested **Start Menu Folder** (i.e., the `\Funambol\Funambol Plug-ins\iPod Plug-in`) and click **Install**.
5. Click **Finish** to close the setup wizard.



Configuring the Plug-in

To configure the software, perform the following:

1. Start the plug-in in Windows by selecting **Start > All Programs > Funambol > Funambol Plug-Ins > iPod Plug-in > iPod Plug-in**.
2. Access the communication settings by selecting **Edit > Communication Settings**. Specify the following settings: Server URL, Username, Password, and Device Id. For details, see "Communication Settings" on page 6.
3. Access the synchronization settings by selecting **Edit > Synchronization Settings**. Specify the sources with which to synchronize, and set the appropriate parameters for each. For details, see "Synchronization Settings" on page 7. Note that default parameters are set on the Funambol server for synchronizing contacts and calendar.

Uninstalling the Software

To uninstall the software, perform the following: **Start > All Programs > Funambol > Funambol Plug-Ins > iPod Plug-in > Uninstall**.

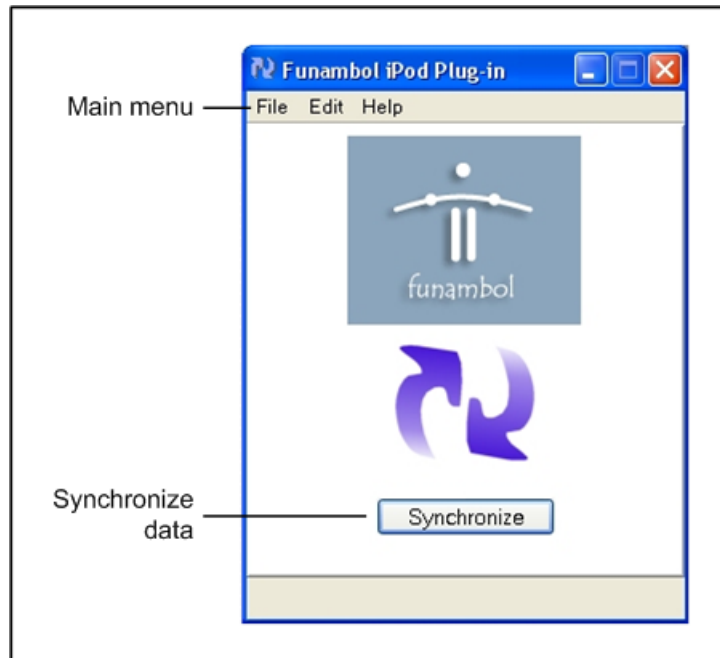


Using the Funambol iPod Plug-in

This section introduces the features of the Funambol iPod Plug-in.

Home Screen

When you start the iPod Plug-in, the following screen appears:



This screen provides the following functionality:

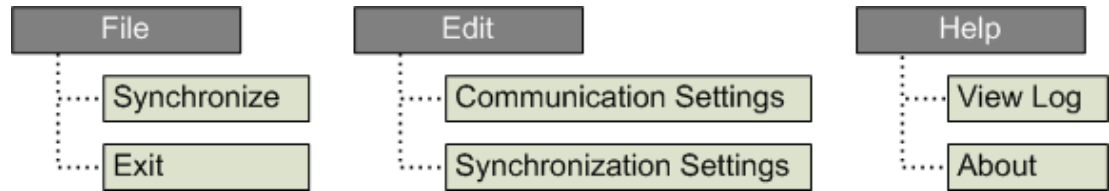
- **Main menu** – access menus for synchronizing, specifying configuration settings, viewing a log file, and quitting the plug-in.
- **Synchronize button** – click to synchronize data using the current settings.

To synchronize data, set your communication and synchronization settings, then attach the iPod and initiate the synchronization. Note that synchronization cannot be initiated from the device.



Main Menu Overview

The Funambol iPod Plug-in main menu contains the following selections:



The selections perform the following actions:

Selection	Action
File > Synchronize	Synchronizes data using the current settings. This is the same as clicking the Synchronize button.
File > Exit	Exits the plug-in.
Edit > Communication Settings	Displays a window for specifying communication settings.
Edit > Synchronization Settings	Displays a window for specifying synchronization settings.
Help > View Log	Displays the contents of the log file.
Help > About	Displays the version number the plug-in.

File Menu

You use the File menu to perform the following:

- Initiate a synchronization using the current settings (**File > Synchronize**)
- Exit the plug-in (**File > Exit**).

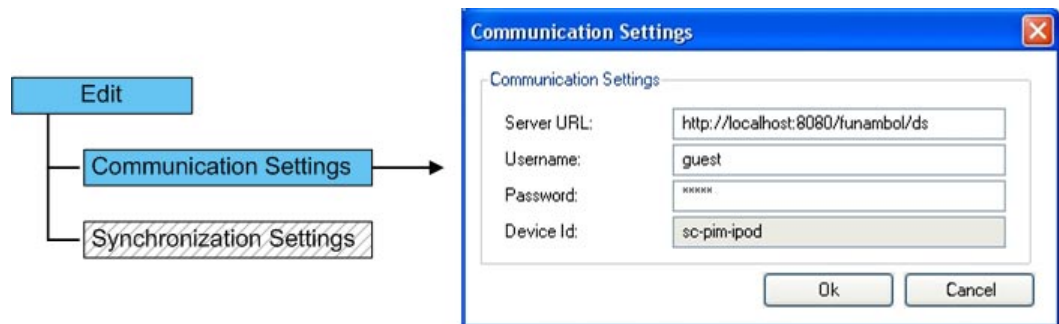
Edit Menu

You use the Edit menu to access the following settings:

- **Communication Settings** – the communication parameters between the Funambol Data Synchronization server and the plug-in.
- **Synchronization Settings** – the source to be synchronized, and preferences associated with synchronization with that source.

Communication Settings

You access communication settings by selecting **Edit > Communication Settings**. The following window displays:

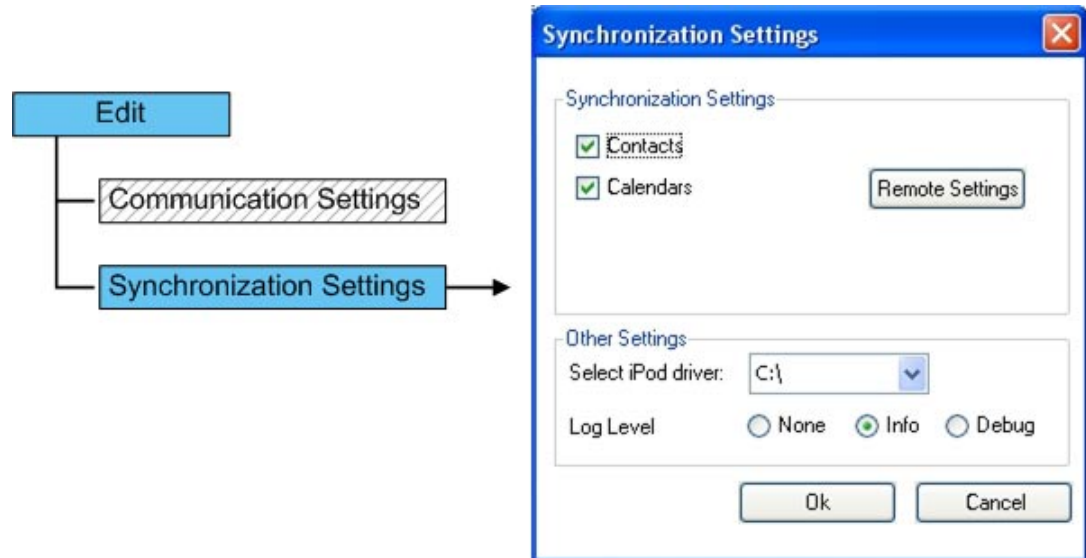


Setting	Description
SyncServer URL	The URL of the synchronization server.
Username	The user ID used to access the database associated with the synchronization server.
Password	The password used to access the database associated with the synchronization server.
Device Id	Id used in user device mapping.

Click **OK** to save the settings; click **Cancel** to close the window without changes.

Synchronization Settings

You access synchronization settings by selecting **Edit > Synchronization Settings**. The following window displays:

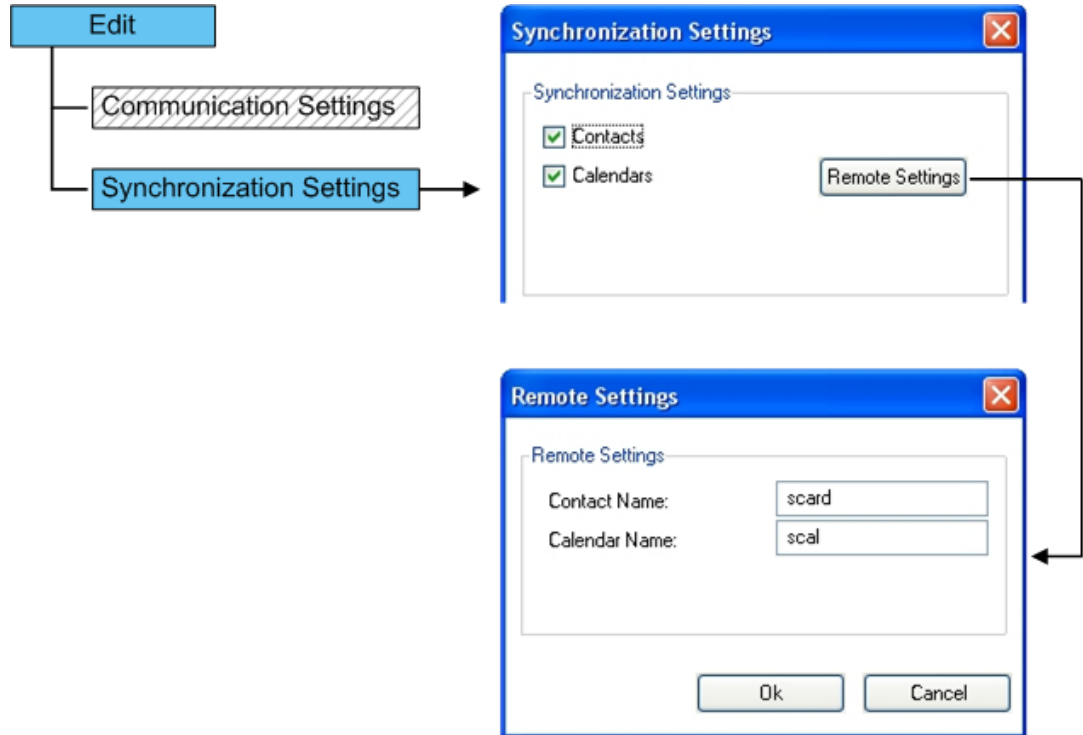


Setting	Description
Synchronization source	Select the source with which to synchronize: <ul style="list-style-type: none"> • Contacts • Calendar
Remote Settings	See “Remote Settings” on page 8.
Select iPod driver	Drive where the iPod is mounted to the computer.
Log Level	Specifies the type of data stored in the log file. Select one of the following: <ul style="list-style-type: none"> • None – No data stored in the log file. • Info – Informational data stored in the log file. • Debug – Debug data stored in the log file. When set to Info or Debug, the file contains the log only for the last synchronization.

Click **OK** to save the settings; click **Cancel** to close the window without changes.

Remote Settings

You access these settings by selecting **Edit** > **Synchronization Settings** and then clicking the **Remote Settings** button, as shown below:



Setting	Description
Contact Name	String that represents the contacts synchronization source (i.e., the URI) on the server. Default = scard (SIF).
Calendar Name	String that represents the calendar synchronization source (i.e., the URI) on the server. Default = scal (SIF).

Click **OK** to save the settings, which are stored in the device registry and used in subsequent synchronizations. Click **Cancel** to close the window without changes.



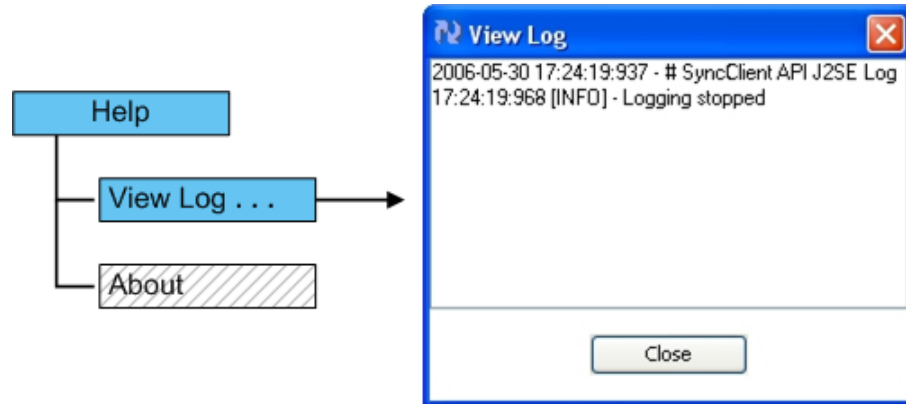
Help Menu

You use the Help menu to access the following:

- **View Log** – displays the log file.
- **About** – displays information about the software.

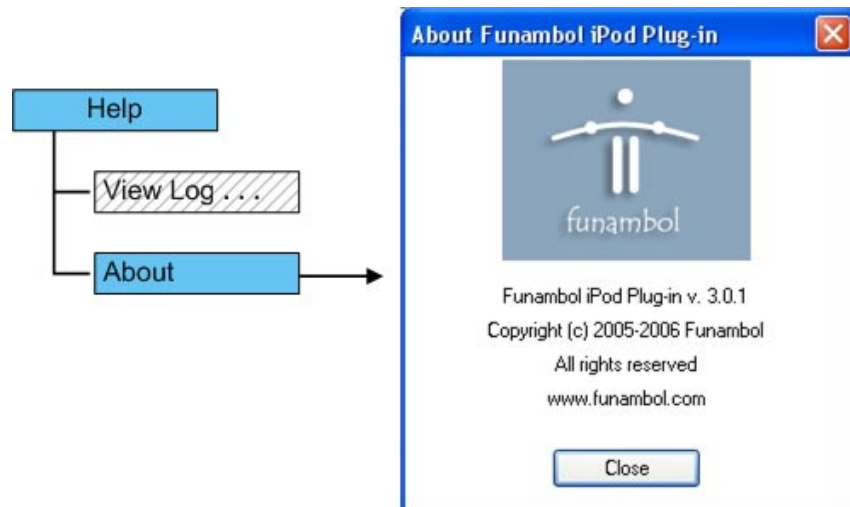
View Log

You access the log file by selecting **Help > View Log**, as shown below:



About

You access information about the software by selecting **Help > About**, as shown below:





Resources

This section lists resources you may find useful.

Related Documentation

This section lists documentation resources you may find useful.

Funambol DS Server Documentation

The following documents form the Funambol DS Server documentation set:

- *Funambol DS Server Architectural Overview*: Read this document for an overview of the architecture.
- *Funambol DS Server Administration Guide*: Read this guide to gain an understanding of installation, configuration, and administration.
- *Funambol DS Server Developer's Guide*: Read this guide to understand how to develop extensions to the server.
- *Funambol DS Server SyncSource API*: Read this reference guide for information on the SyncSource interface and related classes.
- *Funambol DS Server Quick Start Guide*: Read this guide to install and run a simple demonstration of synchronizing PIM data using the Funambol DS Server.
- *Funambol DS Server Module Development Tutorial*: Read this tutorial for instructions on packaging, installing and testing modules.