



Sync4j SugarCRM Connector Quick Start Guide

August 2006

Table of Contents

1. Introduction.....	3
1.1. Related Documents.....	3
2. Installation.....	4
2.1. Requirements.....	4
2.2. SugarCRM patch installation.....	4
2.3. Module installation.....	4
2.4. Configuration.....	5

1. Introduction

The Sync4j SugarCRM Connector allows SyncML enabled clients and devices to exchange contacts and meetings (Calendar) data with SugarCRM via the Sync4j Server. This document describes how to install, configure, and manage the connector and is intended for administrators familiar with the Sync4j Server.

1.1. Related Documents

- [1] Sync4j Interchange Format
- [2] Internet Calendaring and Scheduling Core Object Specification - [RFC 2445]
- [3] Sync4j Modules Development Guide
- [4] Sync4j Server Administration Guide

2. Installation

The Sync4j SugarCRM Connector is distributed as a standard Sync4j module [3]. The distribution contains the following files:

- sync4j-sugarcrm-connector-<major>.<minor>.<buildnumber>.s4j (the module)
- sync4j-sugarcrm-patch-<major>.<minor>.<buildnumber>.zip
- readme.txt
- changeslog.txt
- this guide

In order to use the connector, you have to install the SugarCRM patch (sugarcrm.patch-<major>.<minor>.<buildnumber>.zip) and the s4j file into Sync4j Server how described in the following section.

2.1. Requirements

Currently, the connector is developed and tested using Sync4j 2.3 and SugarCRM 3.5.1 and 4.2.1a. About Sync4j 2.3, please see <http://www.sync4j.org>.

2.2. SugarCRM patch installation

To install the patch:

1. Unzip the file sugarcrm.patch-x.y.v.zip (replace x.y.z with the current version)
The patch contains updated .php files for SugarCRM version 3.5.1 and 4.2.1a. Use the appropriate directory for your version of SugarCRM
2. Copy the content of the appropriate directory over into your existing sugar application directory

2.3. Module installation

To install the module:

1. Place the .s4j file in the directory:
`<installation dir>/Sync4j/server/modules`
2. Modify the “install.properties” file adding “sync4j-sugarcrm-connector-x.y.z” to the modules list:
`modules-to-install=foundation-2.0.1,pdi-1.5.0,pimweb-1.1.6,sync4j-db-1.0.3,sync4j-sugarcrm-connector-x.y.z`
(replace x.y.z with current version)

3. Run the install modules command

For more details about Sync4j module installation see [4].

During installation the following steps are performed automatically:

1. The database is initialized and the connector is registered into the server.
2. The SugarcrmOfficer.xml file is copied in the directory:
`<installation dir>/Sync4j/server/config/sync4j/server/security`
3. The Sync4j.xml configuration file is updated to configure the Sync4j Server to use the SugarcrmOfficer.
4. The logging.xml file is updated to handle the sugar connector logging by Sync4j Admin.

In order to complete the SugarCRM Connector installation you have to set the SugarCRM server url in the file:

`<installation dir>\<syncserver-version>\config\sync4j\server\security\SugarcrmOfficer.xml`

Below is an example of a SugarcrmOfficer.xml file:

```
<?xml version="1.0" encoding="UTF-8"?>
<java version="1.4.0" class="java.beans.XMLDecoder">
  <object class="sync4j.sugarcrm.security.SugarcrmOfficer">

    <void property="sugarUrl">
      <string>http://localhost:800/sugarcrm</string>
    </void>

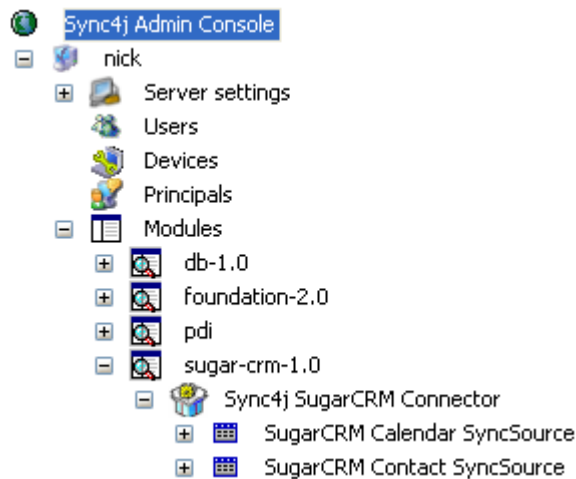
    <void property="version">
      <!-- default is .1 -->
      <string>.1</string>
    </void>

    <void property="applicationName">
      <!-- default is SugarWap -->
      <string>SugarWap</string>
    </void>

  </object>
</java>
```

2.4. Configuration

The connector provides the panels to configure the SyncSources using the Sync4j Admin Console. After installation the following tree structure should appear:



All SyncSources have the following properties:

<i>Property</i>	<i>Description</i>
Source URI	Sync source URI on the Sync4j server [i.e. “./contacts”]
Name	SyncSource name. [i.e. “contacts”]
SugarCRM Server Url	SugarCRM Server url [i.e. “http://localhost/sugarcrm”]
Type	The source type [i.e. “SIFC/vCard”]

The tables below show the SugarCRM SyncSource configuration for use with mobile phones or Sync4j clients that use SIF-XML format.

	<i>Mobile phone clients</i>	<i>SIF-XML based Sync4j Cliens</i>
SugarCRM Contact SyncSource	vCard	SIF-C
SugarCRM Calendar SyncSource	iCal	SIF-E

In the following figures are shown the configuration panels for contact and calendar syncsources.

Figure 1 - Configuration panel for contact SyncSource

Edit SugarCRM SyncSource

Source URI:	<input type="text" value="contact"/>
Name:	<input type="text" value="contact"/>
SugarCRM Server Url:	<input type="text" value="http://localhost/sugarcrm"/>
Type:	<div><div>SIF-C</div><div><div>SIF-C</div><div>vCard</div></div></div>
	<input type="button" value="Add"/>