

Tellus : to run examples

HISTORIQUE DOCUMENT

Version	Date	Description	Auteur
1.0	15/07/09	To run tellus examples	Manuel GOMEZ

TELLUS
project



The open source Alliance
Open Mobile IS & GvSIG

Configurations needed to run Tellus examples

Tellus : to run examples

Index

1 Examples.....	3
------------------------	----------

Tellus : to run examples

1 Examples

The Example part in Tellus, is compose by 3 entites :

- The gvSIG Demo part on PDA
- The OpenMIS Demo part on PDA
- The OpenMIS Demo part on Server

To start, it's recommended to test the configurations and the runnability on Eclipse dev plateform.

So first, download an eclipse.

Then Download :

- OWTellus_V1 on :
`svn+ssh://svn.forge.objectweb.org/svnroot/openmobileis/trunk/modules/Tellus/OWTellus_V1`
- OWOpenmisV1 on
`svn+ssh://svn.forge.objectweb.org/svnroot/openmobileis/trunk/openmiscore/j2se/src/OWOpenmisV1`

ECLIPSE CONFIGURATIONS

JRE

I work with the jre1.5.0_12 on compatibility 1.4. To be sure it will work on PDA when the project will be installed on.

GvSIG Mobile Demo

To start the gvsig part, make a starter as 'Java application' and configure it like that :

- project : OWTellus_V1
- main class : es.prodevelop.gvsig.mobile.app.Launcher
- program args :
 - s=700x440
 - l=fr
 - p="{workspace_loc}/OWTellus_V1/example/gvsig"
- VM args :
 - -Xmx256M
 - -Djava.library.path="{workspace_loc}/resources/lib/Win_X86"
- WorkingDir : \${workspace_loc:OWTellus_V1/example/gvsig}

OpenMIS Mobile Demo

To start the openmis mobile part, make a starter as 'Java application' and configure it like that :

- project : OWTellus_V1
- main class : org.openmobileis.embedded.webserver.StartWebServer
- WorkingDir : \${workspace_loc:OWTellus_V1/example/openmis_pda}

OpenMIS Server Demo

Tellus : to run examples

To start the openmis server part, make a starter as 'Java application' and configure it like that :

- project : OWTellus_V1
- main class : org.openmobileis.embedded.webserver.StartWebServer
- WorkingDir : \${workspace_loc:OWTellus_V1/example/openmis_server}

DATABASE SERVER CONFIGURATIONS

The Openmis server part is working with an MSSQL 2005 database. You have to install it to make your tests

<http://www.microsoft.com/Sqlserver/2005/en/us/express-down.aspx>

Then configure the database (with the manager tool) to check the port is the same than in openmis server file configuration (/OWTellus_V1/example/openmis_server/WEB-INF/conf/properties/server.properties). Default is 1433. Then configure the password in openmis conf file or tape 'tellus' as the authentication password in MSSQL.

Attention! You also have to permit TCP/IP connections in MSSQL. (Protocole to SQLEXPRESS->TCP/IP Active).

Then you can test the OpenMIS Server part, in eclipse. It'll be works!

To open the part server : <http://localhost:8080/services/index>

To open the part PDA openMIS : <http://localhost:9090/services/index>

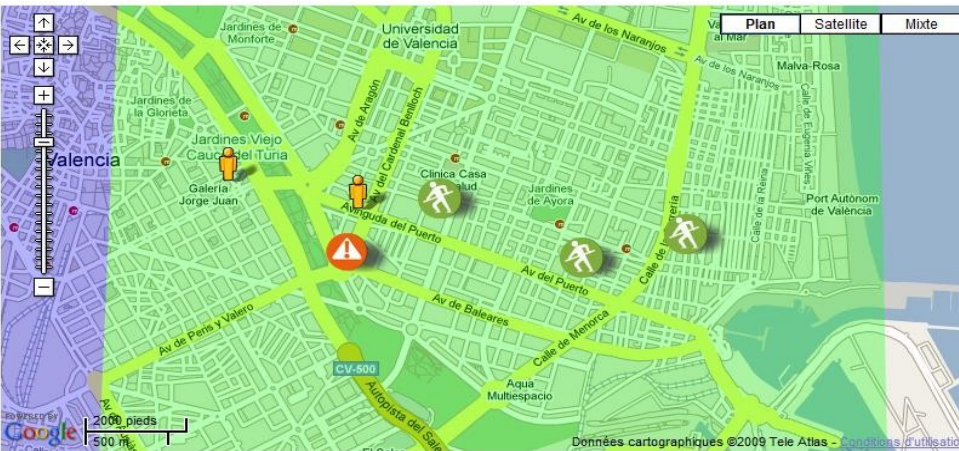
The part Gvsig is launch as visual in eclipse.

SCREENSHOTS

SERVER PART



Planning
Demandes
Historique
Google Map
Techniciens



Données cartographiques ©2009 Tele Atlas - Conditions d'utilisation

Liste des interventions	
POC CDC - :	304532093566
LYONNAISE DE BANQUE/ COURANT FAIBLE - tata :	3
SEPEL EUREXPO/ SONORISATION - toto :	2
MFP MICHELINS/ DIVERS DETECTION INCENDIE - toto :	1

Liste des techniciens	
tutu :	2
titi :	1
toto :	5
tata :	4

Tellus : to run examples



Planning
Demandes
Historique
Google Map
Techniciens

Planning - Interventions Journée toto

lundi 8 Juin

Matin

- **MFP MICHELINS/ DIVERS**
DETECTION INCENDIE
 debut : 08/06/2009 08:00
 fin : 08/06/2009 10:00
 CHAUFFERIE
- **SEPEL EUREXPO/ SONORISATION**
 debut : 08/06/2009 10:00
 fin : 08/06/2009 12:00
 SONO

Après-midi

- Affecter une demande : POC CDC ▼
- Affecter une demande : POC CDC

PDA PART

index > projets

➤ Liste des Projets SIG disponible sur le serveur:

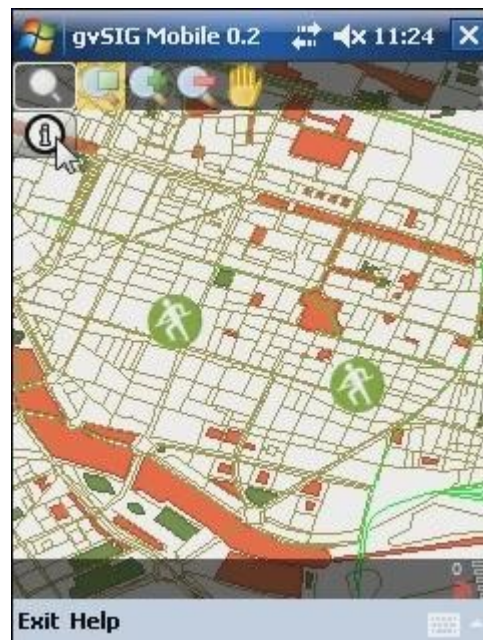
- TELLUS_OWPROJECT
- VALENCIA

➤ Synchronisation :

➤ login :

➤ Password :

Ouverture...



Tellus : to run examples

gvSIG Mobile 0.2 11:24

OpenMIS Info

Client name MFP MICHELINS/ DIVER

OpenMIS Infoc

Time duration 02:00

Objective Réparation de la chaufferie

LINK [View more info](#)

ID 1

Start date 08/06/09 08:00

✓

index > inter

Go to gvSIG

MFP MICHELINS/ DIVERS DETECTION INCENDIE

➤ **Positionner sur la carte**

➤ **Récupérer la position de l'intervention**

➤ **Priorité**
NORMAL

➤ **Adresse**
Calle del Doctor Manuel Candela, 46021, Valence, Espagne

➤ **Horaires**
date début : 08/06/2009
date fin : 08/06/2009
temps prévu : 02:00

➤ **Description**
Objectif : Réparation de la chaufferie

index > demande > demande inter

Demande d'intervention

➤ **Niveau**
Priorite de la demande : Haute

➤ **Identification**
nom : DEMANDE TECHNICIEN : toto - 301850676849

➤ **Résumé**
Type : POMPE A CHALEUR

➤ **Equipe**
Machine : AIXIA_PAC

➤ **Description**

gvSIG Mobile 0.2 11:27

Map view showing a street map with a red building and a blue circle indicating a location. The map is overlaid with a grid.

-0.36452 °, 39.46877 °

Exit Help