

Funambol Palm Plug-in

User's Guide

Version 3.0
July 2006



Important Information

© Copyright Funambol, Inc. 2006. All rights reserved.

The information contained in this publication is subject to US and international copyright laws and treaties. Except as permitted by law, no part of this document may be reproduced or transmitted by any process or means without the prior written consent of Funambol, Inc.

Funambol, Inc. has taken care in preparation of this publication, but makes no expressed or implied warranty of any kind. Funambol, Inc. does not guarantee that any information contained herein is and will remain accurate or that use of the information will ensure correct and faultless operation of the relevant software, service or equipment.

Funambol, Inc., its agents and employees shall not be held liable for any loss or damage whatsoever resulting from reliance on the information contained herein.

Funambol and Sync4j are trademarks and registered trademarks of Funambol, Inc.

All other products mentioned herein may be trademarks of their respective companies.

Published by Funambol, Inc., 643 Bair Island Road, Suite 305, Redwood City, CA 94063



Contents

Introduction	1
Prerequisites	1
Installation	2
Obtaining the Software	2
Installing the Software	2
Configuring the Plug-in	5
Uninstalling the Software	5
Using the Funambol Palm Plug-in	6
Home Screen	6
Main Menu Overview	7
Synchronization Menu	8
Help Menu	9
Resources	11
Related Documentation	11
Other Resources	11





Introduction

The Funambol Palm Plug-in provides synchronization functionality for Palm mobile devices. After installing the software on your mobile device, you can synchronize contacts data on the device with that stored in enterprise data sources. This document describes how to install, configure, and use the software.

Prerequisites

The system requirements for using the Funambol Palm Plug-in are as follows:

Desktop or Portable Computer Used to Install the Plug-in on a Mobile Device

- Palm Desktop corresponding to your Palm device.

For information on obtaining the Palm Desktop, see "Resources" on page 11.



Installation

The section provides details for obtaining, installing and configuring the software.

Obtaining the Software

The Funambol Palm Plug-in software is available as follows:

Download Site: www.funambol.com/opensource/downloads.html

File: `funambol-palm-plugin-3.0.x.zip`

Size: 50 KB

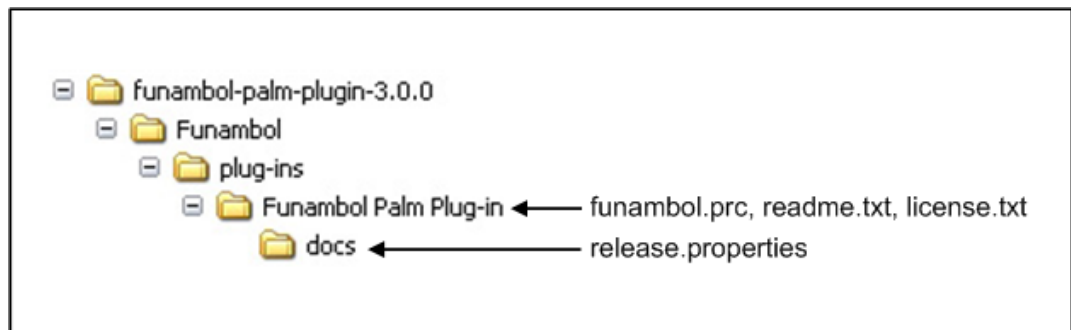
The file contains the following:

- Palm application file: *funambol.prc*
- License and readme files, and the *release.properties* file.

Installing the Software

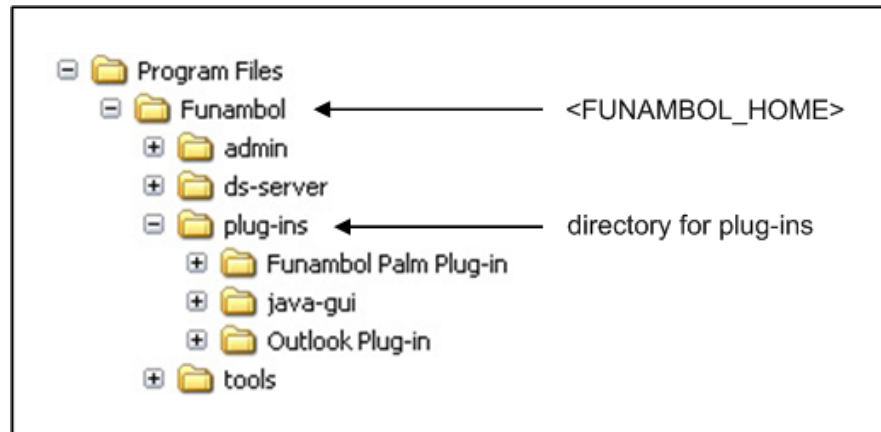
Before proceeding, ensure that the Palm Desktop is installed on your desktop/portable computer. If a previous version of the plug-in is installed on the mobile device, you should uninstall that version before installing the current version.

1. Connect your Palm mobile device to the desktop/portable computer, e.g., via a USB cable.
2. Unzip the `funambol-palm-plugin-3.0.x.zip` file to a temporary directory. Extracting the file creates the following directory structure:

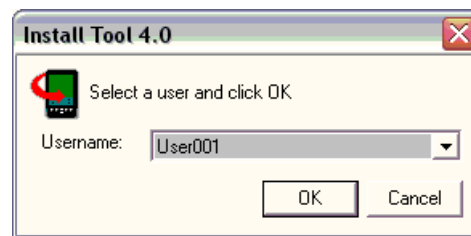




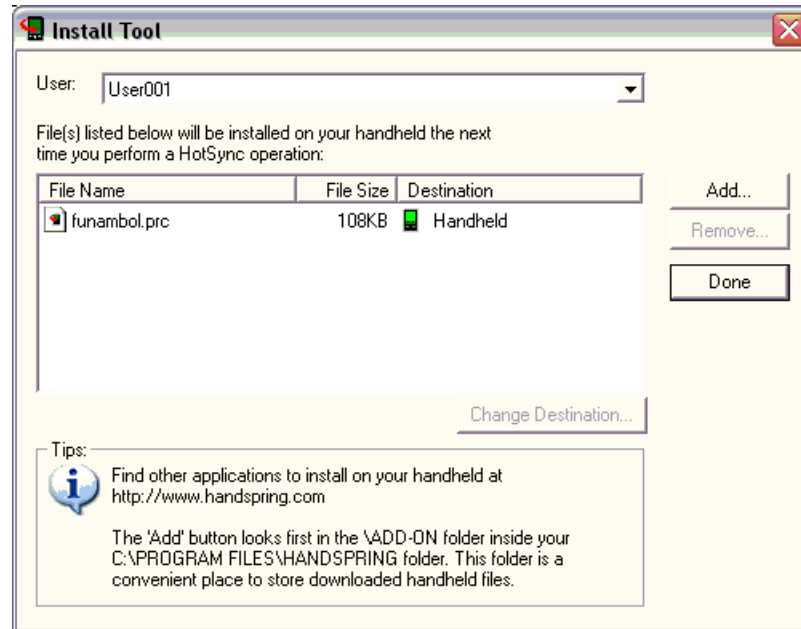
3. Move the **Funambol Palm Plug-in** folder to the /plug-ins directory of the Funambol home directory, as shown below:



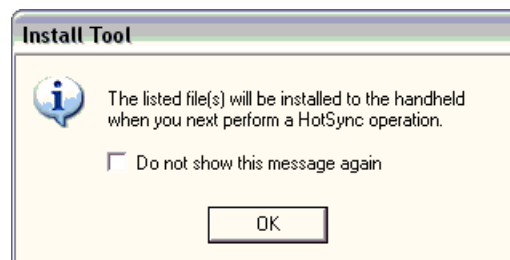
4. Navigate to the <FUNAMBOL_HOME>/plug-ins/Funambol Palm Plug-in directory and click `funambol.prc`. This action starts the Install Tools component of the Palm Desktop, and displays the following dialog box:



5. Select the user of the mobile device connected to the computer and click **OK**. This action displays the following dialog box:



6. The Install Tool displays the user and application to be installed the next time you perform a HotSync operation. Click **Done**. This action displays the following dialog box:



7. Click **OK** to close the dialog box.
8. Perform a HotSync operation to transfer the application to your device.



Configuring the Plug-in

To configure the plug-in, perform the following:

1. On the Home screen of the mobile device, select **Funambol**. This action displays the Synchronization settings window.
2. Specify the following settings: Server URL, Username, Password, Address book remote name, and Log level, then click **OK**. For details, see “Synchronization Menu” on page 8.

Uninstalling the Software

To uninstall the plug-in from the mobile device, perform the following:

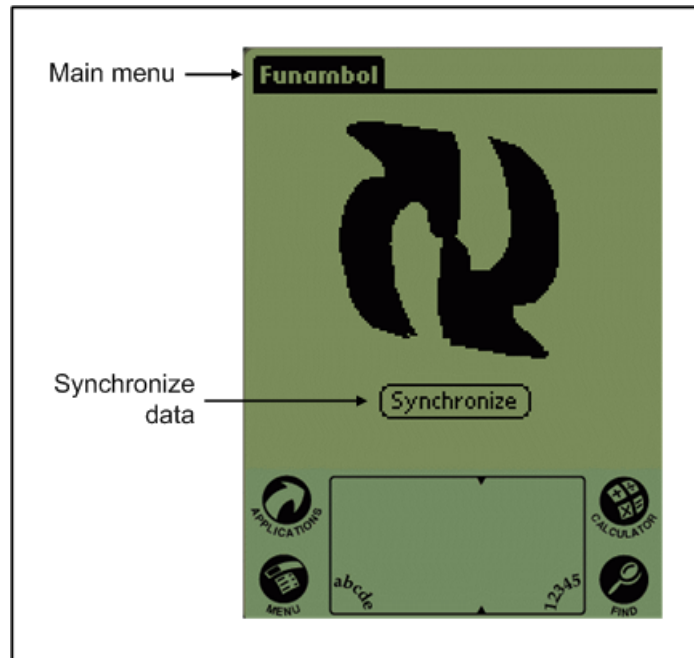
1. On the mobile device, go to the **Home** screen.
2. Click the time display in the upper left corner of the screen.
3. On the drop-down list, select **Delete**.
4. Locate and select the Funambol application (i.e., Funambol), using the scroll bar if necessary.
5. Click **Delete**.
6. Confirm the deletion of the application by clicking **Yes**.

Using the Funambol Palm Plug-in

This section describes the features of the Funambol Palm Plug-in.

Home Screen

When you start the Palm Plug-in, the following screen appears:



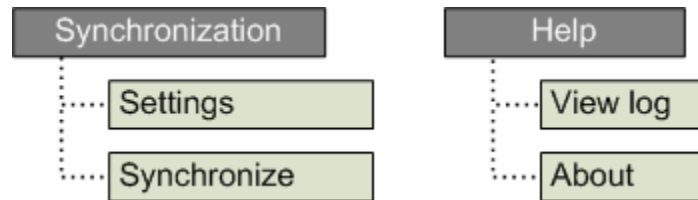
This screen provides the following functionality:

- **Main menu** – click **Funambol** in the upper left corner to access the main menu, which provides selections for synchronizing, specifying settings, and viewing a log file.
- **Synchronize button** – click to synchronize data using the current settings.



Main Menu Overview

The Funambol Palm Plug-in main menu contains the following selections:

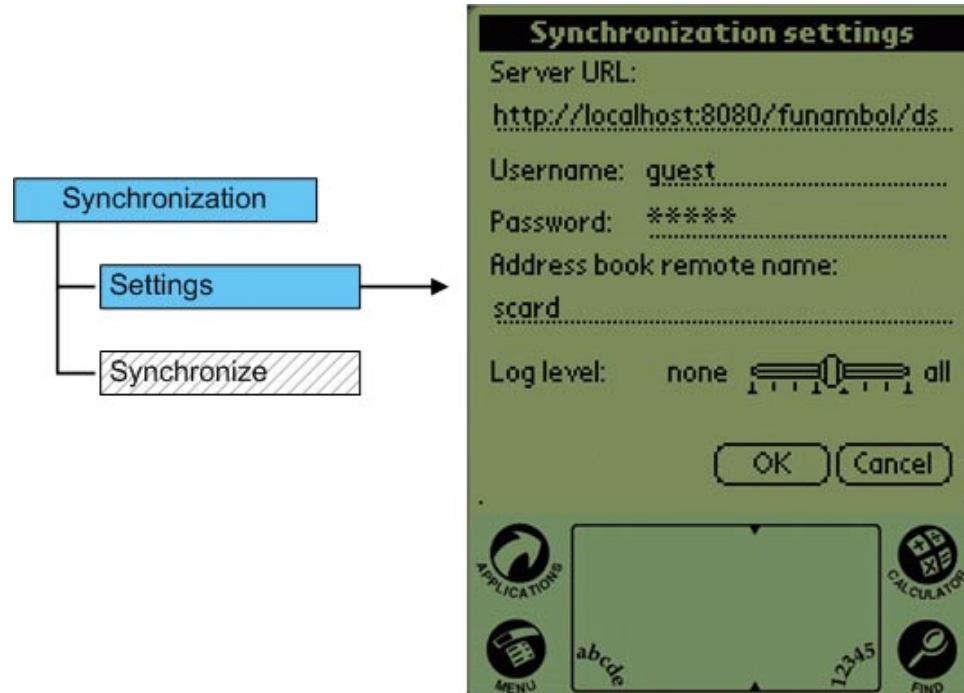


The selections perform the following actions:

Selection	Action
Synchronization > Settings	Displays a window for specifying synchronization settings.
Synchronization > Synchronize	Synchronizes data using the current settings. This is the same as clicking the Synchronize button.
Help > View log	Displays the contents of the log file.
Help > About	Displays the version number the plug-in.

Synchronization Menu

The **Synchronization > Synchronize** selection performs a synchronization using the current settings. The **Synchronization > Settings** selection displays the following window:



Setting	Description
Server URL	The URL of the synchronization server.
Username	The user ID used to access the database associated with the synchronization server.
Password	The password used to access the database associated with the synchronization server.
Address book remote name	String that represents the contacts synchronization source (i.e., the URI) on the server. The following strings are valid: <ul style="list-style-type: none"> • scard – SIF
Log level	Specifies the type of data stored in the log file. Select one of the following: <ul style="list-style-type: none"> • none (far left) – No data stored in the log file. • info (center) – Informational data stored in the log file. • all (far right) – Debug data stored in the log file. When set to info or all, the file contains the log only for the last synchronization.

Click **OK** to save the settings; click **Cancel** to close the window without changes.

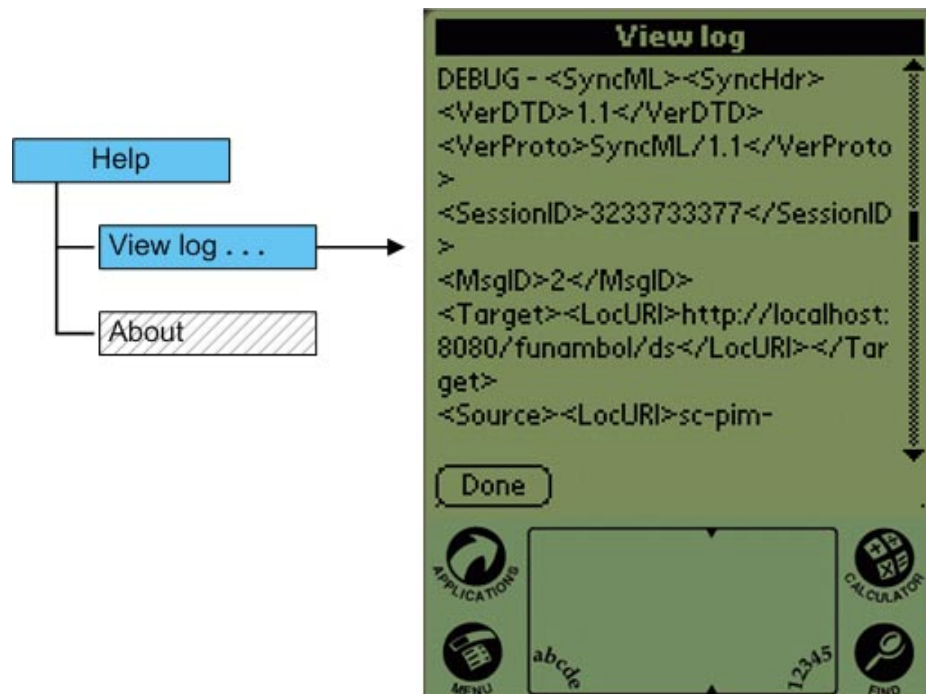
Help Menu

You use the Help menu to access the following:

- **View log** – displays the log file.
- **About** – displays information about the software.

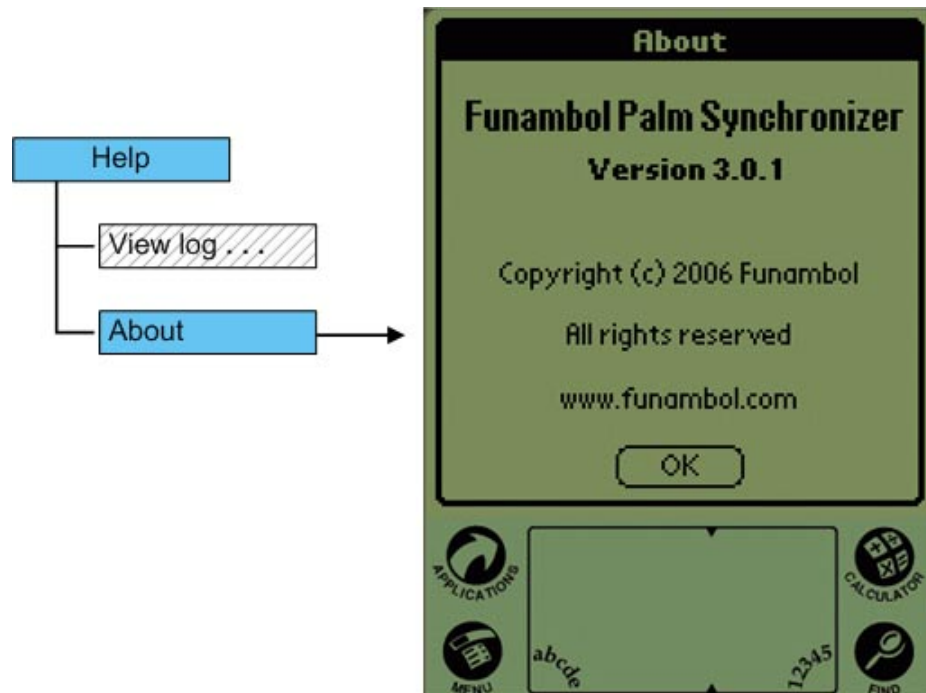
View log

You access the log file by selecting **Help > View log**, as shown below:



About

You access information about the software by selecting **Help > About**, as shown below:





Resources

This section lists resources you may find useful.

Related Documentation

This section lists documentation resources you may find useful.

Funambol DS Server Documentation

The following documents form the Funambol DS Server documentation set:

- *Funambol DS Server Architectural Overview*: Read this document for an overview of the architecture.
- *Funambol DS Server Administration Guide*: Read this guide to gain an understanding of installation, configuration, and administration.
- *Funambol DS Server Developer's Guide*: Read this guide to understand how to develop extensions to the server.
- *Funambol DS Server SyncSource API*: Read this reference guide for information on the SyncSource interface and related classes.
- *Funambol DS Server Quick Start Guide*: Read this guide to install and run a simple demonstration of synchronizing PIM data using the Funambol DS Server.
- *Funambol DS Server Module Development Tutorial*: Read this tutorial for instructions on packaging, installing and testing modules.

Other Resources

This section lists other resources you may find useful.

- For information on Palm mobile devices and the Palm Desktop, visit <http://www.palm.com>.