

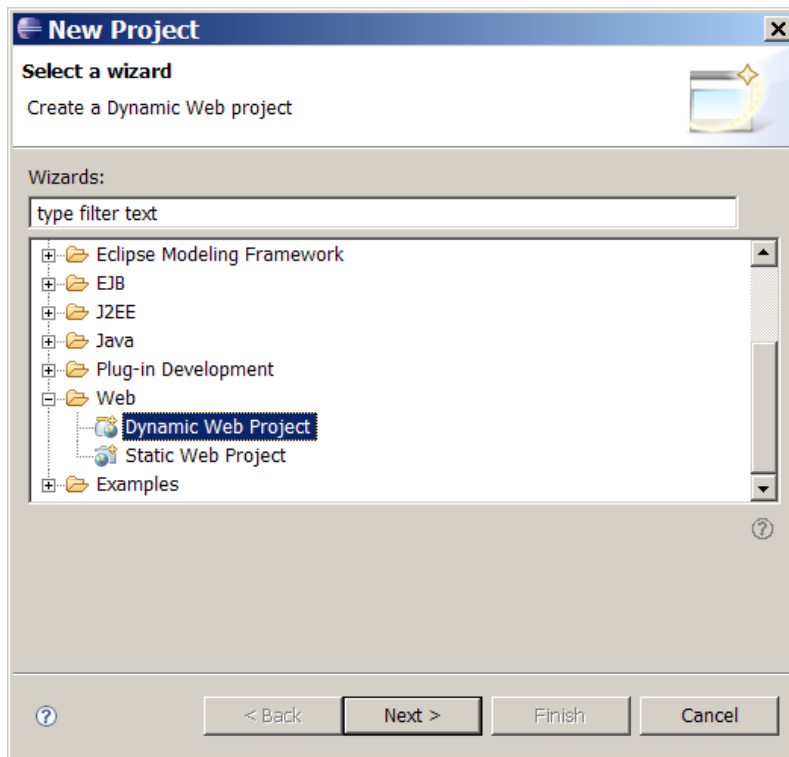
Telosys Starter Kit

How to create a new Telosys project in **Eclipse 3.2 WTP** ...

1 – Create a standard Dynamic Web Project

File → New (Alt+Shift+N) → Project ...

Web → Dynamic Web Project (with Tomcat 5.0)



New Dynamic Web Project

Dynamic Web Project

Create a standalone Dynamic Web project or add it to a new or existing Enterprise Application.

Project name:

Project contents:

Use default

Directory:

Target Runtime

Configurations

Hint: Get started quickly by selecting one of the pre-defined project configurations.

EAR Membership

Add project to an EAR

EAR Project Name:

New Dynamic Web Project


Project Facets

Select the facets that should be enabled for this project.

Configurations:

Project Facet	Version
<input checked="" type="checkbox"/> Dynamic Web Module	2.4 ...
<input checked="" type="checkbox"/> Java	1.4 ...
<input type="checkbox"/> WebDoclet (XDoclet)	1.2.3 ...


New Dynamic Web Project [X]

Web Module
Configure web module settings. 

Context Root:

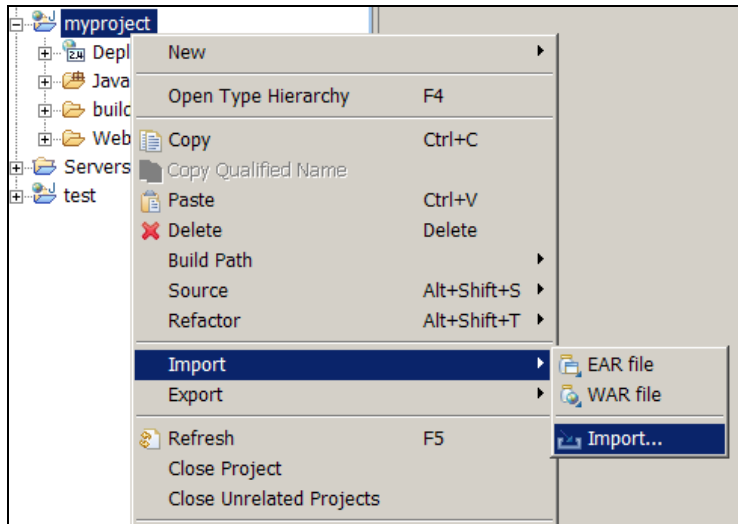
Content Directory:

Java Source Directory:

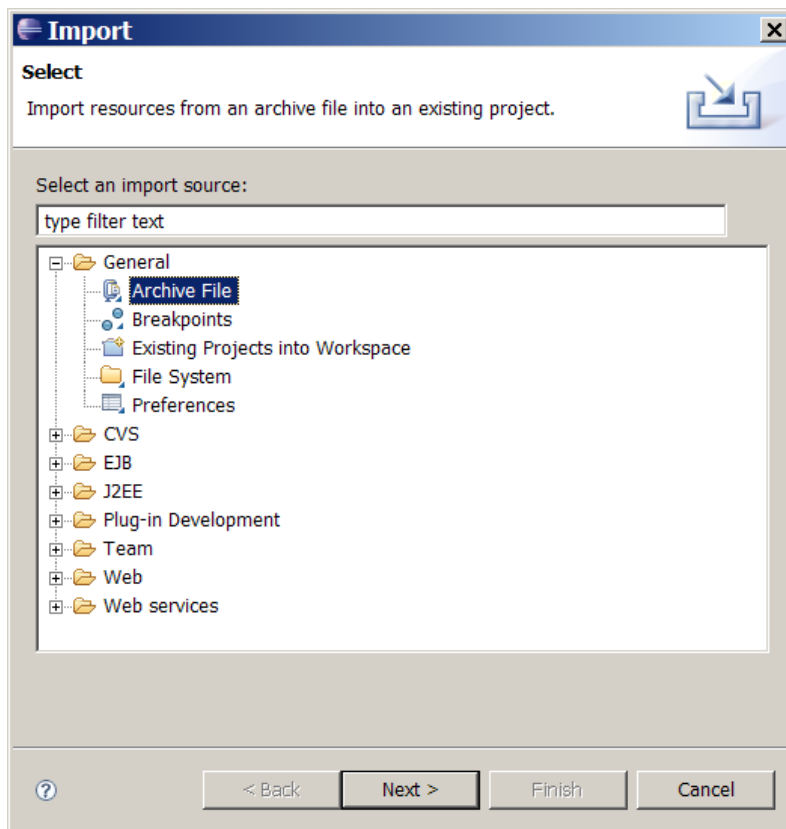


2 – Import the Telosys Starter Kit in the project

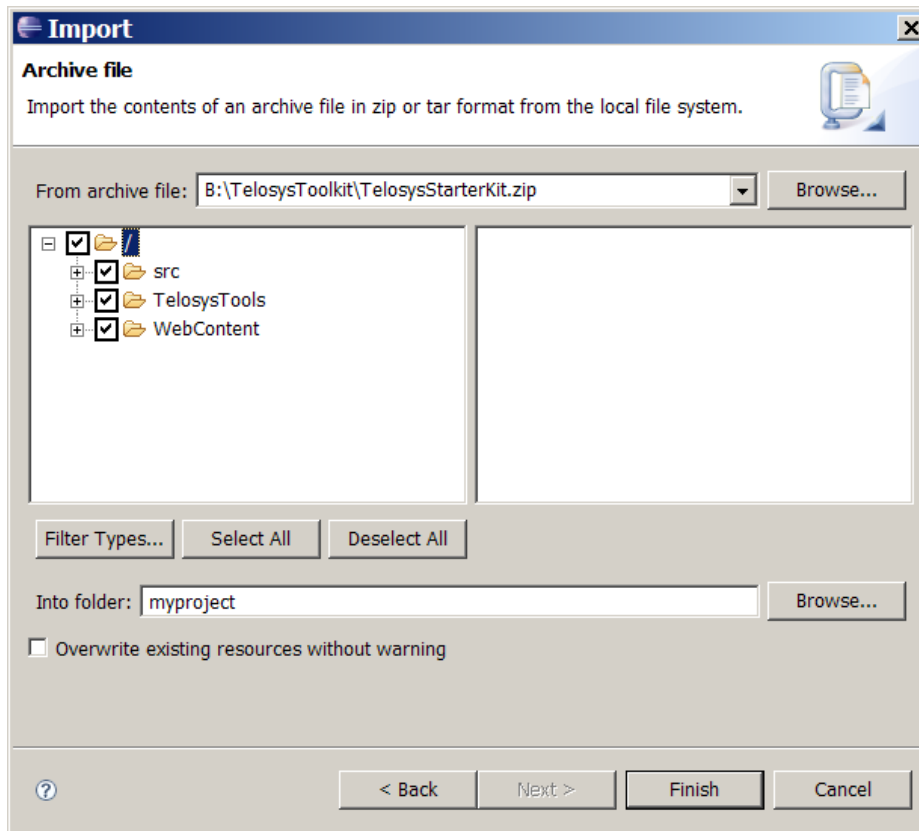
File → Import ...



General → Archive File



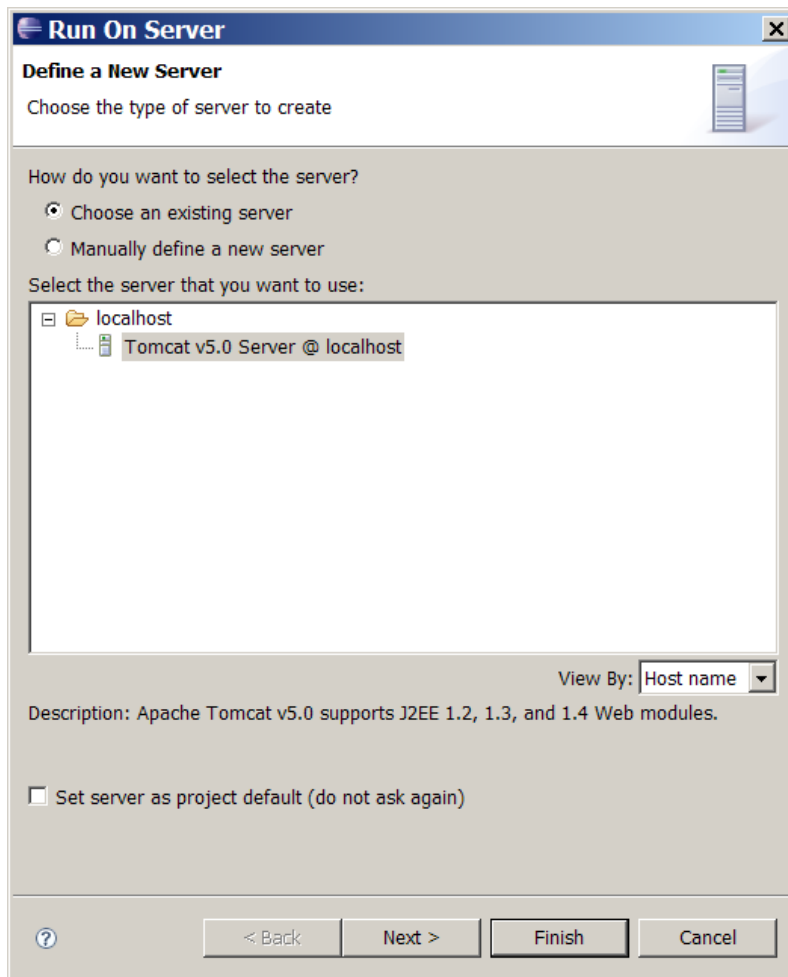
Browse to select the file **telosys-x.x.x-StarterKit.zip** ...

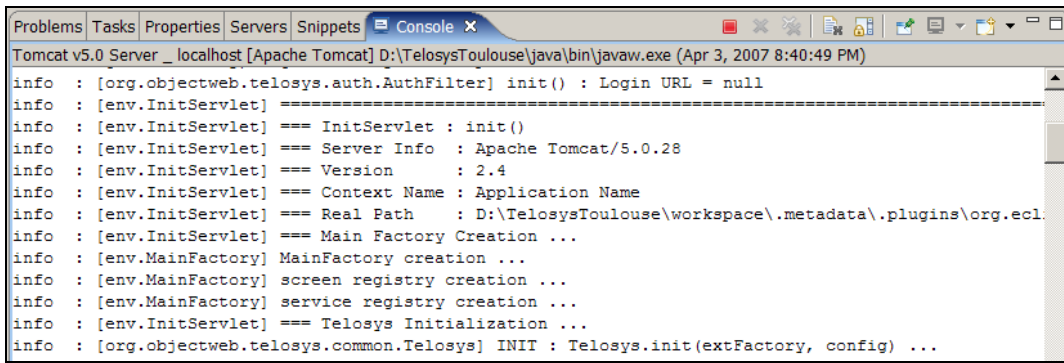


Overwrite 'web.xml' in folder 'xxx/WebContent/WEB-INF' ? → **Yes**

3 – Run the project

Run As → Run on server





The image shows a screenshot of an IDE's console window. The title bar reads "Tomcat v5.0 Server _ localhost [Apache Tomcat] D:\TelosysToulouse\java\bin\javaw.exe (Apr 3, 2007 8:40:49 PM)". The console contains the following log output:

```
info : [org.objectweb.telosys.auth.AuthFilter] init() : Login URL = null
info : [env.InitServlet] =====
info : [env.InitServlet] === InitServlet : init()
info : [env.InitServlet] === Server Info : Apache Tomcat/5.0.28
info : [env.InitServlet] === Version      : 2.4
info : [env.InitServlet] === Context Name : Application Name
info : [env.InitServlet] === Real Path   : D:\TelosysToulouse\workspace\.metadata\.plugins\org.ecl
info : [env.InitServlet] === Main Factory Creation ...
info : [env.MainFactory] MainFactory creation ...
info : [env.MainFactory] screen registry creation ...
info : [env.MainFactory] service registry creation ...
info : [env.InitServlet] === Telosys Initialization ...
info : [org.objectweb.telosys.common.Telosys] INIT : Telosys.init(extFactory, config) ...
```